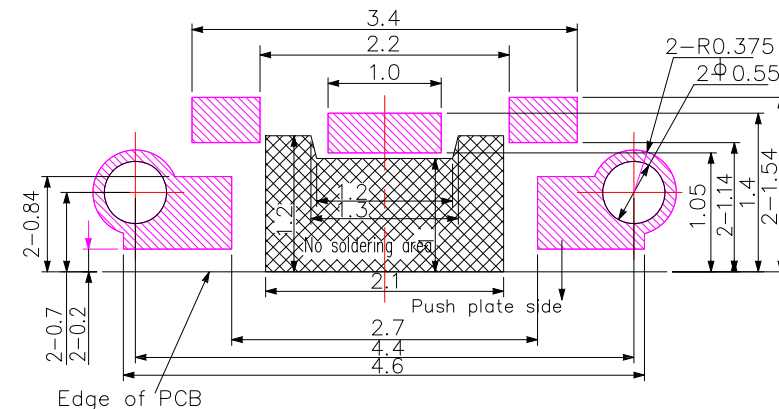
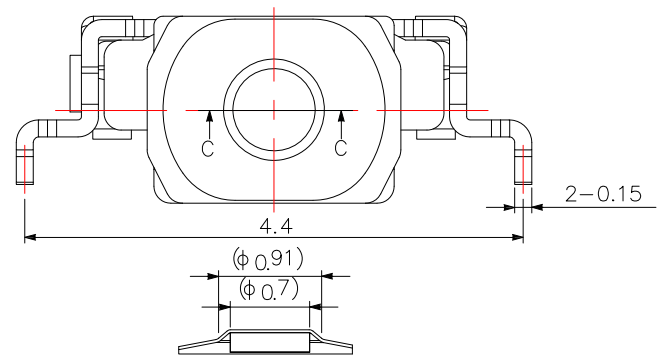


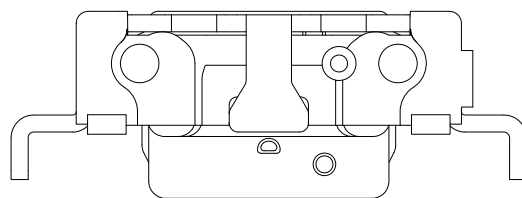
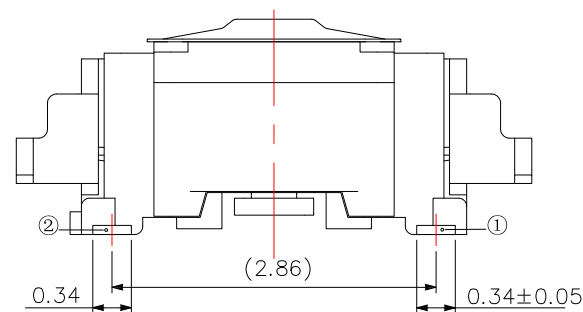
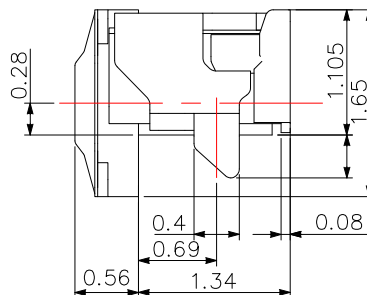
CIRCUIT DIAGRAM



PCB LAYOUT



Actuator cross section (Section C-C)



<Back View>

SPECIFICATIONS

| | | | |
|---------------------------------|-------------------|------------|---------------------------|
| Rating | DC 15V 20mA. | | |
| Insulation Resistance | 50 MΩ Min. | | |
| Contact Resistance | 500 mΩ Max. | | |
| Dielectric Withstanding Voltage | AC 250V for 1 min | | |
| Operating Force | 0 | 100 ± 30gf | 2 160 ± 50gf 3 240 ± 50gf |
| Travel | 0.08mm | | 0.11mm |
| Operating Life (cycles) | 500,000 | | |

東莞市高迪電子有限公司
DONG GUAN GAO DI ELECTRONICS CO., LTD

TOLERANCE UNLESS OTHERWISE STATED

Up to 5 ±0.2
Above 5 ~ 15 ±0.3
Above 15 ~ 30 ±0.4
Above 30 ~ 50 ±0.5
Angle ±0.3°

3RD. ANGEL'S



UNITS

MM

DRAWN BY: Jack Lu
DATE: 04/29/22
CHECKED BY: Jacky Chen
DATE: 04/29/22
APPROVED BY: Tony Kao
DATE: 04/29/22

MAT'L
FINISH
SCALE: 1 : 1
SHEET NO.: 1 of 1

TITLE: SWITCH
MODLE: TACT SWITCH(IP67)
DWG NO.: TS-A99W-x-S182
PART NO.: TS-A99W-x-S182

SIZE: A4
VER: R1

| | | | |
|----------|---------------|-------|--------|
| 1 | 更新料號及新增Travel | Jack | 042922 |
| ITEM NO. | DESCRIPTION | DRAWN | DATE |