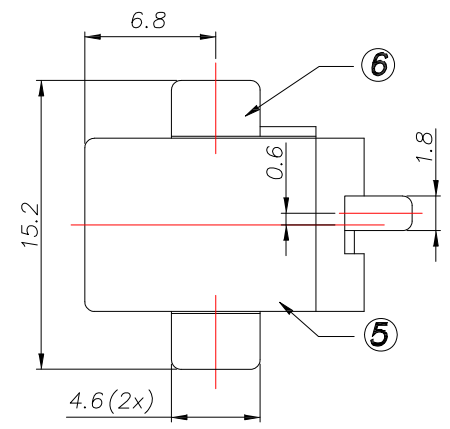
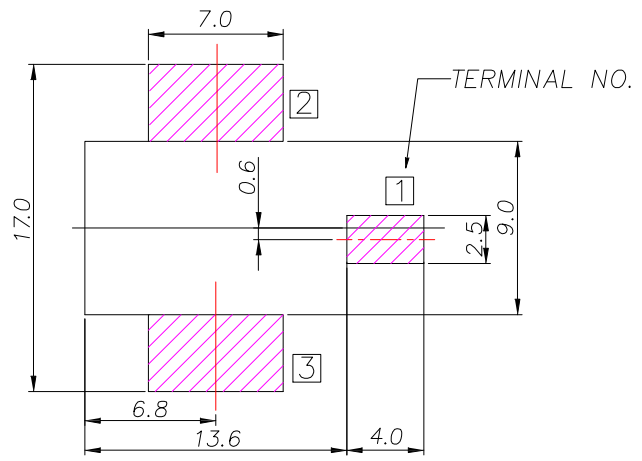


DC MATE PLUG

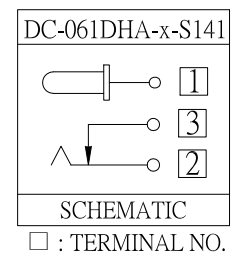


**SPECIFICATION**

1. Rating : DC 16V 5.0A
2. Contact resistance :  $\leq 30m\Omega$
3. Insulation resistance :  $\geq 100M\Omega$
4. Withstand voltage : 500VAC
5. Insertion and extraction force : 3-30N
6. life test : 5,000 cycles

RECOMENDED P.C.B LAYOUT  
(COPPER-SIDED VIEW)

Model NO.	DC-061DHA-2.0	DC-061DHA-2.5
CENTER PIN	$\phi 2.0$	$\phi 2.5$



NO.	DESCRIPTION	QTY	MATERIAL	REMARK
6	Shunt terminal	1	Brass	Ag-Plating
5	Tip spring	1	Phosphor Bronze	Ag-Plating
4	Center pin terminal	1	Brass	Ag-Plating
3	Center pin	1	H59	Ni-Plating
2	Cover	1	PA9T	Black
1	Housing	1	PA9T	Black



TOLERANCE UNLESS OTHERWISE STATED :  
 Up to 5 ±0.2  
 Above 5 ~ 15 ±0.3  
 Above 15 ~ 30 ±0.4  
 Above 30 ~ 50 ±0.5  
 Angle ±0.3

3RD. ANGEL'S

UNITS MM

DRAWN BY:	DATE	MAT'L	TITLE	JACK
Jack Lu	07/16/14			
CHECKED BY:	DATE	FINISH	MODLE	DC JACK
Jacky Chen	07/16/14			
APPROVED BY:	DATE	SCALE	DWG NO.	DC-061DHA-x-S141
Tony Kao	07/16/14	1 : 1		
		SHEET NO.	PART NO.	DC-061DHA-x-S141
		1 of 1		

ITEM NO.	DESCRIPTION	DRAWN	DATE
2	更新料號及電壓值	Jack	071614
1	更新材質	Jack	070914