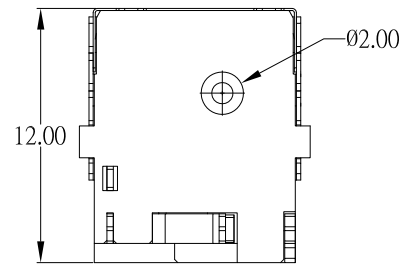


**SPECIFICATION**

1. Rating : 24V , 5.0A
2. Contact resistance :  $\leq 50m\Omega$
3. Insulation resistance :  $\geq 100M\Omega$
4. Withstand voltage : 500VAC
5. Insertion and extraction force : 3-40N
6. life test : 5,000 cycles



NO.	DESCRIPTION	QTY	MATERIAL	PLATING
⑦	DUMMY PIN	1	STAINLESS STEEL	
⑥	SHELL	1	COPPER ALLOY	Tin over Ni
⑤	SHELL COVER	1	STAINLESS STEEL	Ni-Plating
④	M3	1	COPPER ALLOY	Ni-Plating
③	M4	1	COPPER ALLOY	Ni-Plating
②	CENTER PIN	1	COPPER ALLOY	Tin over Ni
①	HOUSING	1	HIGH TEMP PLASTIC	Black

ITEM NO.	DESCRIPTION	DRAWN	DATE
4	更新SPEC	Jack	100118
3	新增pcb layout尺寸	Jack	052418
2	更新圖面	Jack	052218
1	更新圖面	Jack	051618

**東莞市高迪電子有限公司**  
**DONG GUAN GAO DI ELECTRONICS CO., LTD**

TOLERANCE UNLESS OTHERWISE STATED :  
 Up to 5 ±0.2  
 Above 5 ~ 15 ±0.3  
 Above 15 ~ 30 ±0.4  
 Above 30 ~ 50 ±0.5  
 Angle ±0.3

3RD. ANGEL'S

UNITS MM

DRAWN BY:	DATE	MAT'L	TITLE	JACK
Jack Lu	10/01/18			
CHECKED BY:	DATE	FINISH	MODLE	DC JACK
Jacky Chen	10/01/18			
APPROVED BY:	DATE	SCALE	DWG NO.	DC-D296BH-1.0-S214
Tony Kao	10/01/18	1 : 1		
		SHEET NO.	PART NO.	DC-D296BH-1.0-S214
		1 of 1		
			SIZE	A4
			VER	R4