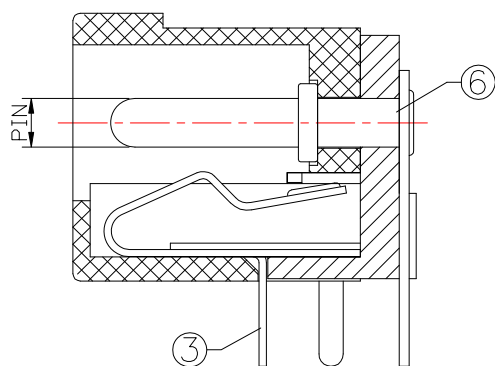


P.C.B LAYOUT
TOP VIEW



SPECIFICATION

1. Rating : DC 30V 2.0A ;
2. Contact resistance : $\leq 30m\Omega$;
3. Insulation resistance : $\geq 100M\Omega$;
4. Withstand voltage : 500VAC ;
5. Insertion and extraction force : 3-30N;
6. life test : 5,000 cycles .

MODEL NO.	DC-002-3-x
SCHEMATIC	
CENTER PIN	$\phi 2.0$ mm
	$\phi 2.5$ mm

NO.	DESCRIPTION	QTY	MATERIAL	PLATING
6	PIN	1	BRASS	Ni-Plating
5	FLAT FOOT	1	BRASS	Sn-Plating
4	CURVE PIECE	1	BRASS	Sn-Plating
3	SPRING PIECE	1	PHOSPHOR BRONZE	Sn-Plating
2	COVER	1	PBT	
1	HOUSING	1	PBT	



TOLERANCE UNLESS OTHERWISE STATED :
 Up to 5 ± 0.2
 Above 5 ~ 15 ± 0.3
 Above 15 ~ 30 ± 0.4
 Above 30 ~ 50 ± 0.5
 Angle $\pm 0.3'$

3RD. ANGEL'S



UNITS MM

DRAWN BY:	DATE	MAT'L	TITLE	JACK
Jack Lu	04/23/19		MODLE	DC JACK
CHECKED BY:	DATE	SCALE	DWG NO.	DC-002-3-x-S124
Jacky Chen	04/23/19	1 : 1	PART NO.	DC-002-3-x-S124
APPROVED BY:	DATE	SHEET NO.		
Tony Kao	04/23/19	1 of 1		

ITEM NO.	DESCRIPTION	DRAWN	DATE
1	更新樣式	Ian	042319