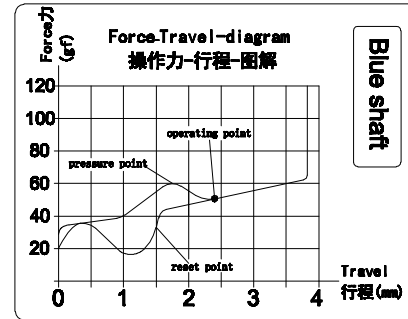
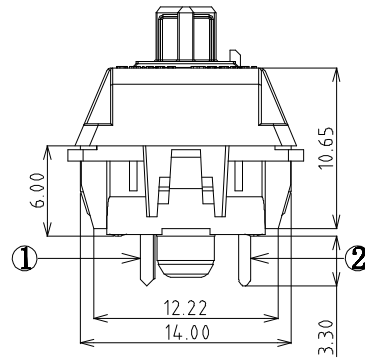
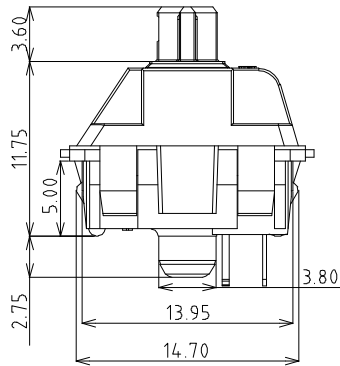
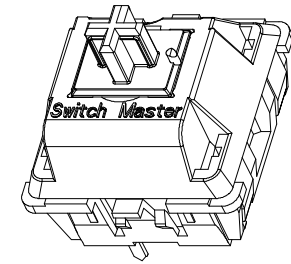
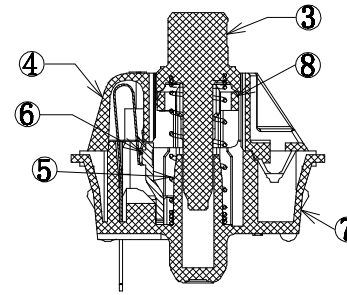
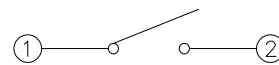
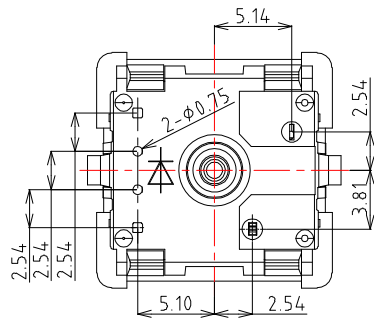


PCB Layout (Pattern Side)



Specification :

1. Rating :12 VAC/DC max. 2 VDC min.
10mA AC/DC max. 10 μ A DC min.
2. Contact Resistance : 200m Ω Max
3. Insulation Resistance : 100M Ω Min (DC100V)
4. Withstand Voltage :AC500V (50-60Hz) for 1 minute
5. Bounce Time: \leq 5msec (at 16 in/sec. actuation speed)
6. Operation Force : 50 \pm 15gf
7. Pressure Point Force : 60 \pm 15gf
8. Pretravel: 2.0mm \pm 0.4mm
9. Total travel: 4.0+0/-0.3mm
10. Operating Life : 50,000,000 Cycles (min)
11. Protection class: IP40



Circuit Diagram

⑧	Follower	—	1	POM	White	—
⑦	Base	—	1	Nylon	Black	—
⑥	contact	—	2	Silver alloy	Brushing Gold	—
⑤	Spring	—	1	Stainless Steel	—	—
④	Cover	—	1	Nylon	Black	—
③	Keystroke	—	1	POM	Blue	—
②	Terminal	—	1	Brass	Plating Nickel	—
①	Reed	—	1	Copper Alloy	—	—
ITEM	PART NAME	TER'NO.	QTY.	MATERIAL	FINISHING	REMARK

東莞市高迪電子有限公司
DONG GUAN GAO DI ELECTRONICS CO., LTD

TOLERANCE UNLESS OTHERWISE STATED :
Up to 5 \pm 0.2
Above 5 ~ 15 \pm 0.3
Above 15 ~ 30 \pm 0.4
Above 30 ~ 50 \pm 0.5
Angle \pm 0.3

3RD. ANGEL'S

UNITS MM

DRAWN BY:	DATE	MAT'L	TITLE	SWITCH
Jack Lu	12/16/15	FINISH	MODLE	Keyboard Switch / Blue Shaft
CHECKED BY:	DATE	SCALE	DWG NO.	KS-01C-50-S105
Jacky Chen	12/16/15	SHEET NO.	PART NO.	KS-01C-50-S105
APPROVED BY:	DATE			
Tony Kao	12/16/15			

ITEM NO.	DESCRIPTION	DRAWN	DATE
1	更新MODLE	Jack	121615