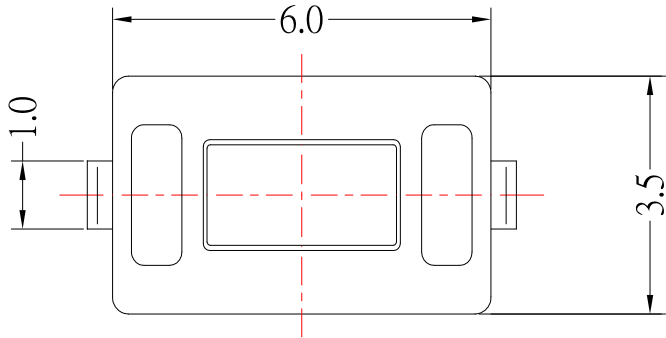
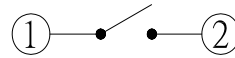




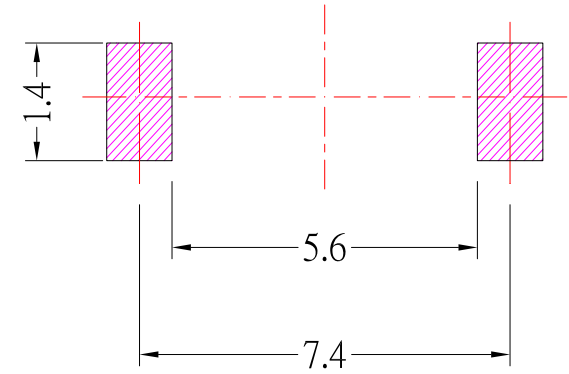
DIMENSIONS



CIRCUIT DIAGRAM

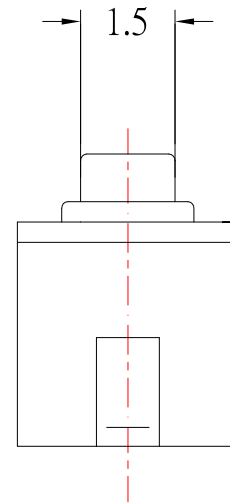
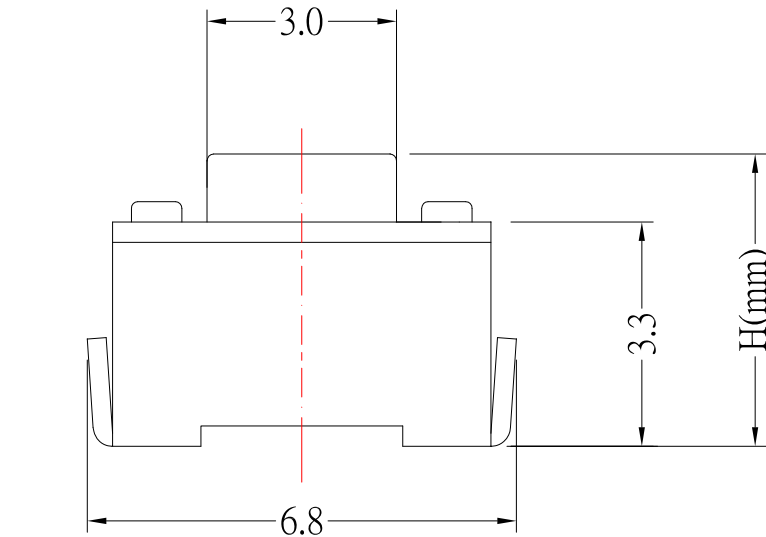


P.C.B LAYOUT MOUNTING PATTERN



HEIGHT

| MODEL | H(mm) |
|------------------|-------|
| TS-A01NH-x-S138 | 4.3 |
| TS-A01NHA-x-S138 | 5.0 |



SPECIFICATIONS

| | | | | | |
|-------------------------|------------------|------------|------------|------------|------------|
| Rating | DC 12V 50mA Max. | | | | |
| Contact Resistance | 100mΩ Max. | | | | |
| Travel | 0.25 ± 0.10 mm | | | | |
| Operating Force | 0 100±30gf | 1 130±30gf | 2 160±50gf | 3 250±50gf | 4 320±50gf |
| Operating Life (cycles) | 50,000 | | 30,000 | | |



TOLERANCE UNLESS OTHERWISE STATED :
 Up to 5 ±0.2
 Above 5 ~ 15 ±0.3
 Above 15 ~ 30 ±0.4
 Above 30 ~ 50 ±0.5
 Angle ±0.3

3RD. ANGEL'S



UNITS MM

| | | | | |
|--------------|----------|-----------|----------|------------------|
| DRAWN BY: | DATE | MAT'L | TITLE | SWITCH |
| Jack Lu | 04/23/14 | | MODLE | TACT SWITCH |
| CHECKED BY: | DATE | SCALE | DWG NO. | TS-A01NHx-x-S138 |
| Jacky Chen | 04/23/14 | 1 : 1 | PART NO. | TS-A01NHx-x-S138 |
| APPROVED BY: | DATE | SHEET NO. | | |
| Tony Kao | 04/23/14 | 1 of 1 | | |

| ITEM NO. | DESCRIPTION | DRAWN | DATE |
|----------|----------------------|-------|--------|
| 1 | 新增Operating Force選項4 | Jack | 042314 |