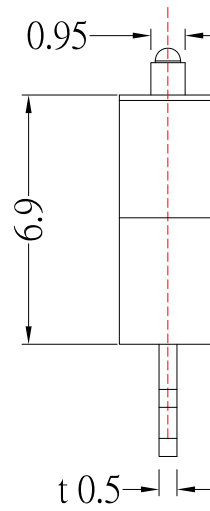
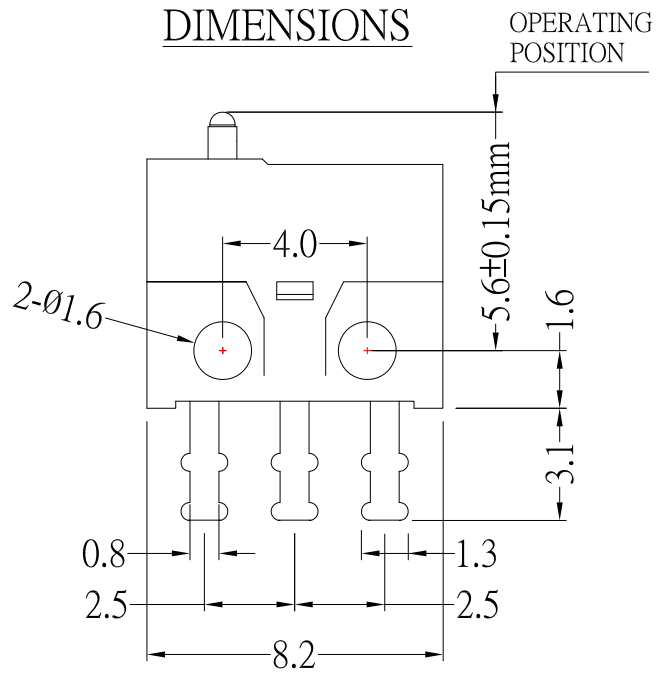
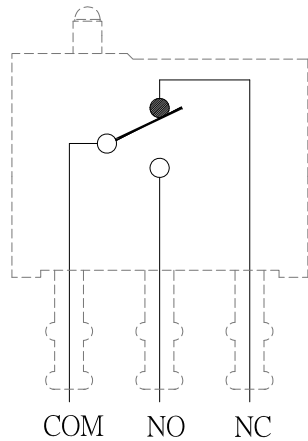
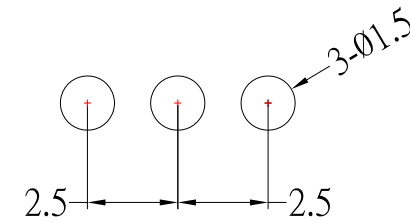


DIMENSIONS



P.C.B LAYOUT MOUNTING



SPECIFICATION

1. Rating : DC 30V 500mA ;
2. Operating force : 120gf Max ;
3. Operating position : 5.6±0.15 mm ;
4. Contact resistance : 100m ohm Max ;
5. Operating life : 300,000 cycles ◦



TOLERANCE UNLESS OTHERWISE STATED :

Up to 5	±0.2
Above 5 ~ 15	±0.3
Above 15 ~ 30	±0.4
Above 30 ~ 50	±0.5
Angle	±0.3°

3RD. ANGEL'S



UNITS

MM

DRAWN BY:	DATE	MAT'L	TITLE	SWITCH
Frank Wu	06/01/12		MODLE	MICRO SWITCH
CHECKED BY:	DATE	FINISH	SCALE	1 : 1
Jacky Chen	06/01/12		DWG NO.	SSM-002
APPROVED BY:	DATE	SHEET NO.	PART NO.	SSM-002
Tony Kao	06/01/12	1 of 1		

ITEM NO.	DESCRIPTION	DRAWN	DATE