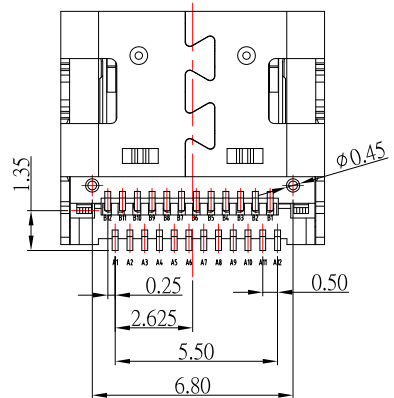
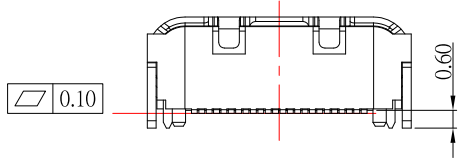
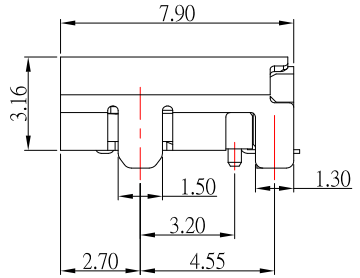
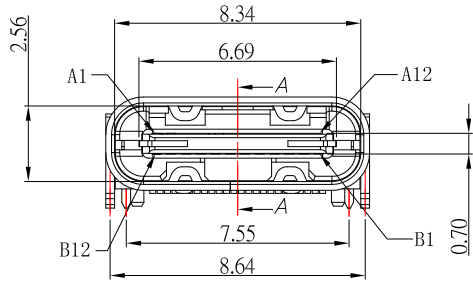
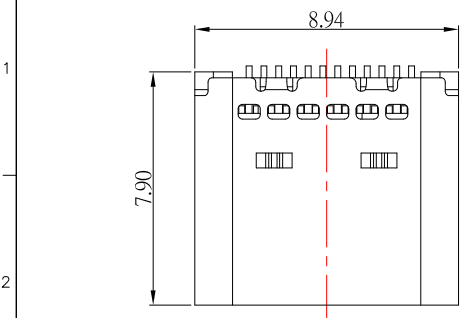
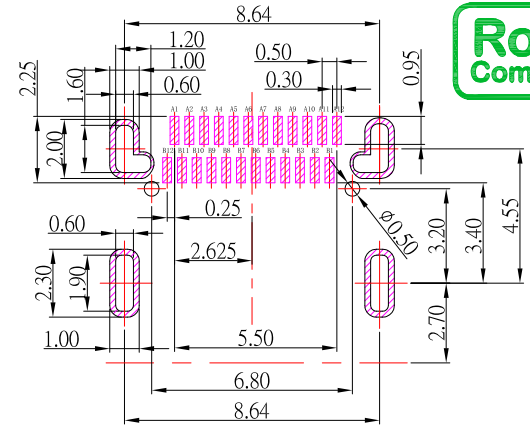




SBC-240S4-32x-S242

鍍層厚度:

Blank	: 1u"
2	: 15u"
3	: 30u"



SPECIFICATIONS

- Electrical:**
- 1.Rating: 3.0 A
 - 2.Dielectric Withstand Voltage: 100V AC
 - 3.Contact Resistance: 40 mΩ Max
 - 4.Insulation Resistance: 100 MΩ Min
- Mechanical:**
- 1.Connector Mate and Unmate Force
 - 1.1 Mate force: 5~20 N
 - 1.2 Unmate force: 8~20 N
- Material:**
- 1.Housing: LCP
 - 2.Contact: Copper Alloy
 - 3.Shell: SUS
- Finish:**
- 1.Contact: Plated Gold in Mating Area ;
Tin Plated on Solder Balls ;
Nickel under plated overall
 - 2.Shell: Nickel under Plated surface layer



TOLERANCE UNLESS OTHERWISE STATED

Up to 5	±0.2
Above 5 ~ 15	±0.3
Above 15 ~ 30	±0.4
Above 30 ~ 50	±0.5
Angle	±0.3°

3RD. ANGEL'S

DRAWN BY:	DATE	MAT'L	TITLE	CONNECTOR
Jack Lu	11/09/22			
CHECKED BY:	DATE	FINISH	MODLE	TYPE CF 雙排 SMT 有柱 GEN 2
Jacky Chen	11/09/22			
APPROVED BY:	DATE	SCALE	DWG NO.	SBC-240S4-32x-S242
Tony Kao	11/09/22	1 : 1	PART NO.	SBC-240S4-32x-S242
		SHEET NO.	1 of 1	
				SIZE A4
				VER R1

1	新槽PCBLAYOUT尺寸	Jack	110922
ITEM NO.	DESCRIPTION	DRAWN	DATE