

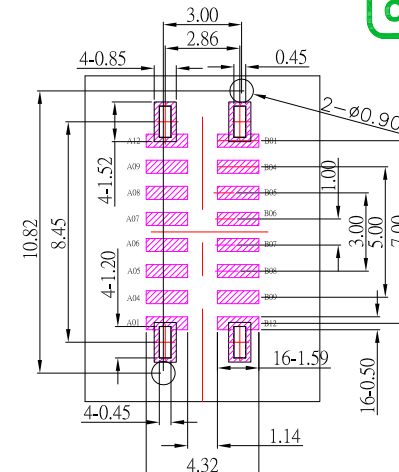
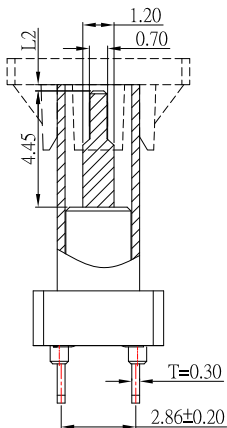
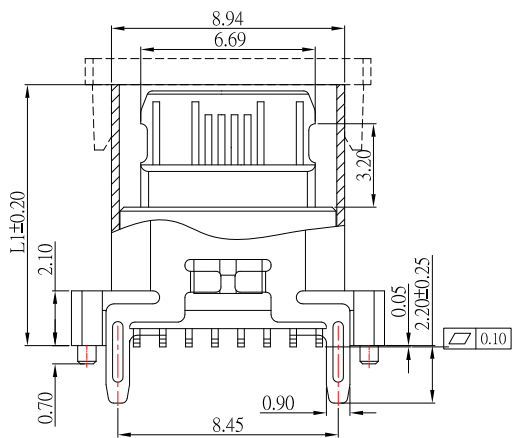
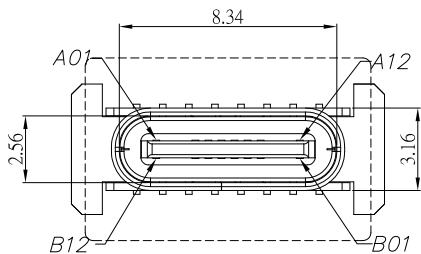


# SBC-160VSE<sub>x</sub>-20x-S412

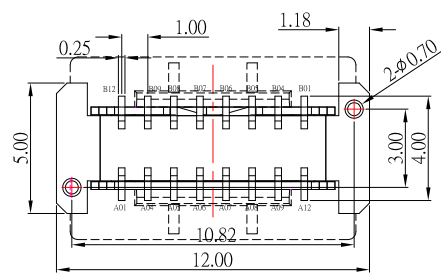
鍍層厚度:

Blank	: 1u"
2	: 15u"
3	: 30u"

	A	B	C	D	F	J	K
L1	9.30	10.00	10.50	12.40	13.10	13.70	15.00
L2	0.46	0.24	0.74	0.00	0.70	1.30	0.55



RECOMMENDED P.C.B. LAYOUT  
TOP VIEW



A1	GND	B12	GND
A4	VBUS	B9	VBUS
A5	CC1	B8	SBU2
A6	D-	B7	D-
A7	D+	B6	D+
A8	SBU1	B5	CC2
A9	VBUS	B4	VBUS
A12	GND	B1	GND
PIN	SIGNAL NAME	PIN	SIGNAL NAME

## SPECIFICATIONS

### Electrical:

1. Dielectric Withstand Voltage: 100V AC
2. Contact Resistance: 40 mΩ Max
3. Insulation Resistance: 100 MΩ Min

### Mechanical:

1. Connector Mate and Unmate Force
  - 1.1 Mate force: 5~20 N
  - 1.2 Unmate force: 8~20 N

### Material:

1. Housing: LCP
2. Contact: C7025
3. Shell: SUS

### Finish:

1. Contact: Plated Gold in Mating Area ;  
Gold Plated on Solder Balls ;  
Nickel under plated overall
2. Shell: Nickel under Plated surface layer

11	更新料號(REEL包裝)	Jack	032422	16	新增PCB LAYOUT樣式尺寸	Jack	042823
10	新增尺寸選項	Jack	011822	15	刪除高度尺寸8.8選項	Jack	040623
9	更新樣式及尺寸和新增尺寸	Jack	092221	14	新增高度尺寸選項	Jack	030123
8	更新材質和鍍層	Jack	073021	13	更新料號	Jack	011823
7	更新PCB LAYOUT及新增零件底部尺寸標示	Jack	052621	12	新增CAP樣式	Jack	110422

6	更新PCB LAYOUT	Jack	112320
5	新增PCB LAYOUT尺寸	Jack	111220
4	新增尺寸	Jack	082020
3	更新高度選項	Jack	070920
2	更新MODLE	Jack	062420
1	更新接腳編號位置	Jack	121919
ITEM NO.	DESCRIPTION	DRAWN	DATE



TOLERANCE UNLESS OTHERWISE STATED:

Up to 5 ±0.2  
Above 5 ~ 15 ±0.3  
Above 15 ~ 30 ±0.4  
Above 30 ~ 50 ±0.5  
Angle ±0.3°

3RD. ANGEL'S



UNITS MM

DRAWN BY:	DATE	MAT'L	TITLE	CONNECTOR
Jack Lu	04/28/23	FINISH	MODLE	TYPE C 16P 180度 SMT 帶定位柱
CHECKED BY:	DATE	SCALE	DWG NO.	SBC-160VSE <sub>x</sub> -20x-S412
Jacky Chen	04/28/23	SHEET NO.	PART NO.	SBC-160VSE <sub>x</sub> -20x-S412
APPROVED BY:	DATE	1 of 1		
Tony Kao	04/28/23			

SIZE	A4
VER	R16