

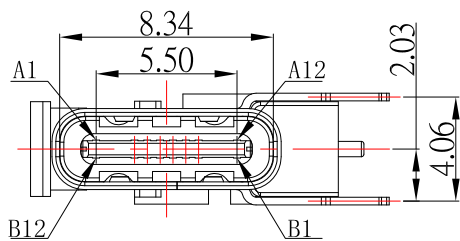
B12	A1
B9	A4
B8	A5
B7	A6
B6	A7
B5	A8
B4	A9
B1	A12

RECOMMENDED P.C.B. LAYOUT

SBC-160P4-20x-S410

鍍層厚度:

Blank : 1u"
2 : 15u"
3 : 30u"



A1	GND	B12	GND
A2		B11	
A3		B10	
A4	VBUS	B9	VBUS
A5	CC1	B8	SBU 2
A6	D+	B7	D-
A7	D-	B6	D+
A8	SBU1	B5	CC 2
A9	VBUS	B4	VBUS
A10		B3	
A11		B2	
A12	GND	B1	GND

SPECIFICATIONS

Electrical:

- 1.Rating: 3.0 A
- 2.Dielectric Withstand Voltage: 100V AC
- 3.Contact Resistance: 40 mΩ Max
- 4.Insulation Resistance: 100 MΩ Min

Mechanical:

- 1.Connector Mate and Unmate Force
 - 1.1 Mate force: 5~20 N
 - 1.2 Unmate force: 8~20 N

Material:

- 1.Housing: LCP
- 2.Contact: C7025
- 3.Shell: SUS

Finish:

- 1.Contact: Plated Gold in Mating Area ;
Gold Plated on Solder Balls ;
Nickel under plated overall
- 2.Shell: Nickel under Plated surface layer



TOLERANCE UNLESS OTHERWISE STATED:
 Up to 5 ±0.2
 Above 5 ~ 15 ±0.3
 Above 15 ~ 30 ±0.4
 Above 30 ~ 50 ±0.5
 Angle ±0.3°

3RD. ANGEL'S

UNITS MM

DRAWN BY:	DATE	MAT'L	TITLE	CONNECTOR
Jack Lu	05/19/22			
CHECKED BY:	DATE	FINISH	MODLE	USB 3.1 側插母座 16 PIN CH6.7
Jacky Chen	05/19/22			
APPROVED BY:	DATE	SCALE	DWG NO.	SBC-160P4-20x-S410
Tony Kao	05/19/22	1 : 1	PART NO.	SBC-160P4-20x-S410
		SHEET NO.	1 of 1	SIZE A4
				VER R