

B12	A1
B9	A4
B8	A5
B7	A6
B6	A7
B5	A8
B4	A9
B1	A12

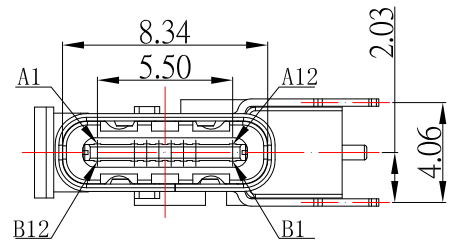
RECOMMENDED P.C.B. LAYOUT

### SBC-160P3-20x-S410

鍍層厚度:

Blank : 1u"
2 : 15u"
3 : 30u"

A1	GND	B12	GND
A2		B11	
A3		B10	
A4	VBUS	B9	VBUS
A5	CC1	B8	SBU2
A6	D+	B7	D-
A7	D-	B6	D+
A8	SBU1	B5	CC2
A9	VBUS	B4	VBUS
A10		B3	
A11		B2	
A12	GND	B1	GND



### SPECIFICATIONS

#### Electrical:

- Rating: 5.0 A
- Dielectric Withstand Voltage: 100V AC
- Contact Resistance: 40 mΩ Max
- Insulation Resistance: 100 MΩ Min

#### Mechanical:

- Connector Mate and Unmate Force
  - Mate force: 5~20 N
  - Unmate force: 8~20 N

#### Material:

- Housing: LCP
  - Contact: C7025
  - Shell: SUS
- Finish:**
- Contact: Plated Gold in Mating Area ;  
Gold Plated on Solder Balls ;  
Nickel under plated overall
  - Shell: Nickel under Plated surface layer



TOLERANCE UNLESS OTHERWISE STATED:  
 Up to 5 ±0.2  
 Above 5 ~ 15 ±0.3  
 Above 15 ~ 30 ±0.4  
 Above 30 ~ 50 ±0.5  
 Angle ±0.3°

3RD. ANGEL'S



UNITS

MM

DRAWN BY:	DATE
Jack Lu	10/18/21
CHECKED BY:	DATE
Jacky Chen	10/18/21
APPROVED BY:	DATE
Tony Kao	10/18/21

MAT'L		TITLE	CONNECTOR
FINISH		MODLE	USB 3.1 側插母座 16 PIN
SCALE	1 : 1	DWG NO.	SBC-160P3-20x-S410
SHEET NO.	1 of 1	PART NO.	SBC-160P3-20x-S410

SIZE	A4
VER	R

ITEM NO.	DESCRIPTION	DRAWN	DATE