



# SBC-160M9-20x-S242

鍍層厚度:

Blank : 1u"
2 : 15u"
3 : 30u"

## SPECIFICATIONS

### Electrical:

- 1.Rating: 3.0 A
- 2.Dielectric Withstand Voltage: 100V AC
- 3.Contact Resistance: 40 mΩ Max
- 4.Insulation Resistance: 100 MΩ Min

### Mechanical:

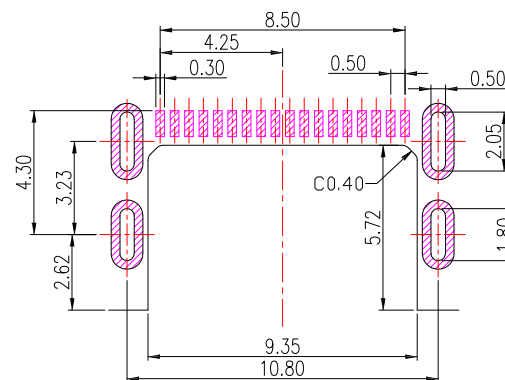
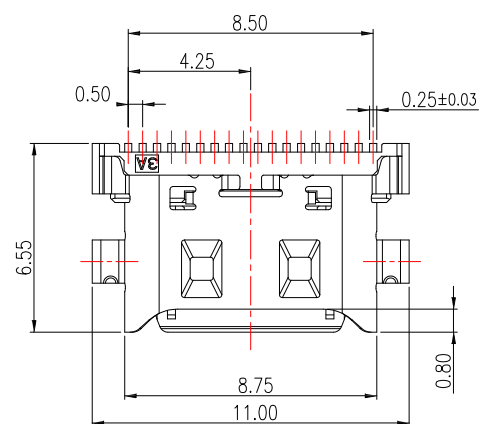
- 1.Connector Mate and Unmate Force
  - 1.1 Mate force: 5~20 N
  - 1.2 Unmate force: 8~20 N

### Material:

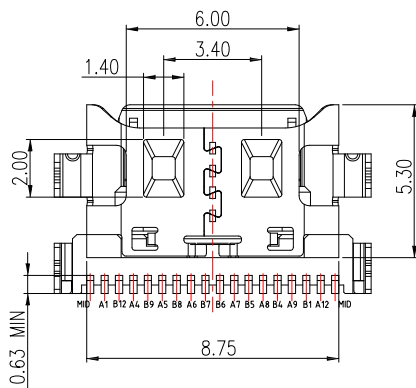
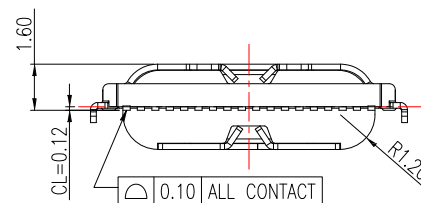
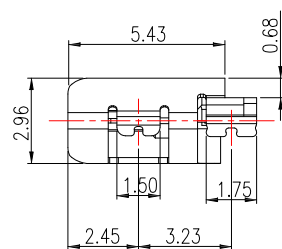
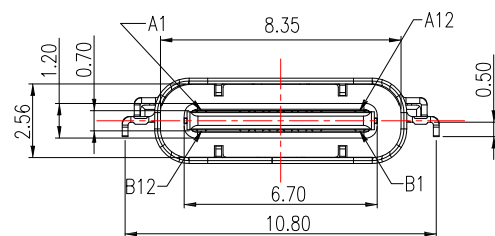
- 1.Housing: LCP
- 2.Contact: Copper Alloy
- 3.Shell: SUS

### Finish:

- 1.Contact: Plated Gold in Mating Area ;  
Tin Plated on Solder Balls ;  
Nickel under plated overall
- 2.Shell: Nickel under Plated surface layer



RECOMMENDED P.C.B. LAYOUT



Pin	Name	Pin	Name
A1	GND	B12	GND
	SSTXp1		SSRXp1
	SSTXn1		SSRXn1
A4	VBUS	B9	VBUS
A5	CC1	B8	SBU2
A6	Dp1	B7	Dn2
A7	Dn1	B6	Dp2
A8	SBU1	B5	CC2
A9	VBUS	B4	VBUS
	SSRXn2		SSTXn2
	SSRXp2		SSTXp2
A12	GND	B1	GND



TOLERANCE UNLESS OTHERWISE STATED:

Up to 5 ±0.2  
Above 5 ~ 15 ±0.3  
Above 15 ~ 30 ±0.4  
Above 30 ~ 50 ±0.5  
Angle ±0.3°

3RD. ANGEL'S



UNITS MM

DRAWN BY:	DATE	MAT'L	TITLE	CONNECTOR
Jack Lu	05/13/20		MODLE	USB C TYPE 2.0 母座沉板, 板上 H1.6mm
CHECKED BY:	DATE	FINISH	DWG NO.	SBC-160M9-20x-S242
Jacky Chen	05/13/20	SCALE 1 : 1	PART NO.	SBC-160M9-20x-S242
APPROVED BY:	DATE	SHEET NO.	1 of 1	
Tony Kao	05/13/20			

ITEM NO.	DESCRIPTION	DRAWN	DATE