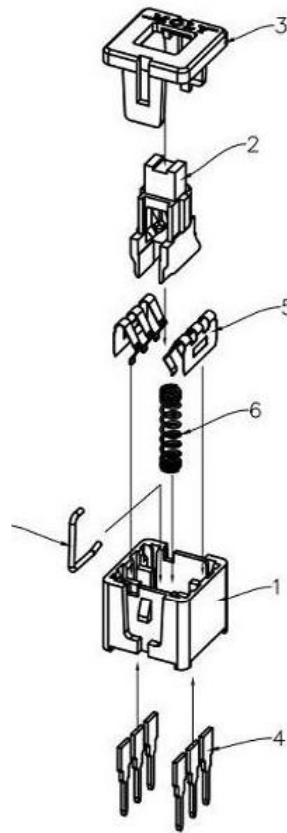
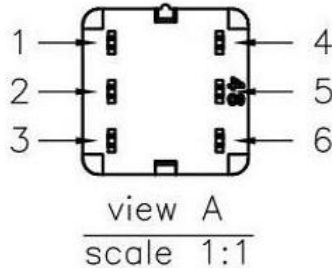


View A



FREE			LOCK		
1	2	3	1	2	3
4	5	6	4	5	6

SCHEMATIC (NON-SHORTING)

SPECIFICATIONS

- (1) LIFE TEST: 10000 cycles at a speed of 15-18 cycles
- (2) CONTACT RESISTANCE: 100mΩ max
- (3) INSULATION RESISTANCE: 100MΩ min
- (4) DIELECTRIC STRENGTH: 250V AC FOR 1MIN
- (5) OPERATING TEMPERATURE: -16°C - +60°C
- (6) RATING: 0.1A 30V DC
- (7) FUNCTION: 2P2T
- (8) TIMING: NON-SHORTING
- (9) OPERATING FORCE: 180gf ± 50gf

NO.	PARTS	MATERIALS	Q'TY	TOLERANCE UNLESS SPECIFIED	ISSUE	DATE	DESCRIPTIONS OF REVISION	APPD.	
8									
7									
6				WITHIN 1.5mm : ±0.1mm	A	2016-10-14	初版		
5	SPRING	SUS304	1	NATURAL	ISSUE	DATE	DESCRIPTIONS OF REVISION	APPD.	
4	CAM STICK	SUS304	1	NATURAL	TITLE : VERTICAL PUSH SWITCH				
3	CASE	PA66/BRASS STRIP	1	GREY/Ag PLATED	UNIT : mm		DRWG NO.:		
2	COVER	PA66+15%F.G	1	BLACK	SCALE: 5:1		DWN.	2016-10-14	
1	KNOB	PA66+15%F.G/PBS STRIP	1	BLACK/Ag CLAD	MODEL:				
				東莞市高迪電子有限公司 DONGGUANGAODIELECTRONICS CO.,LTD.				CHK'D	2016-10-14
								APPD.	