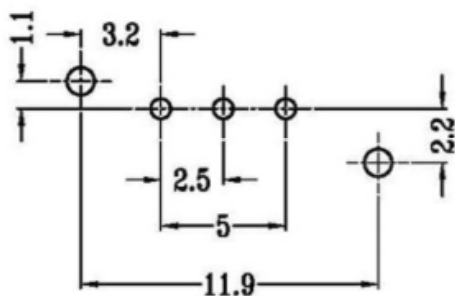
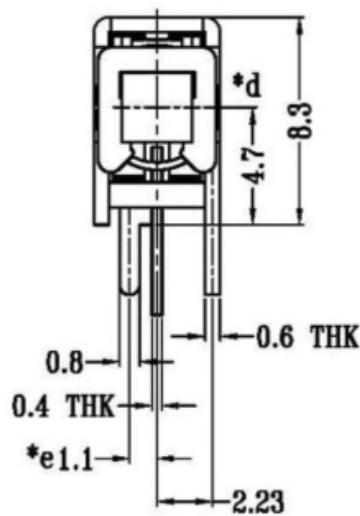
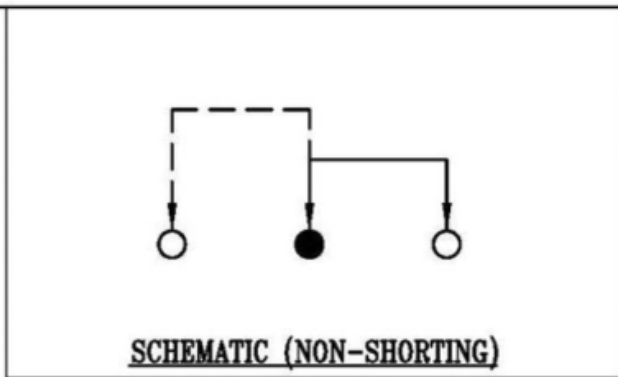
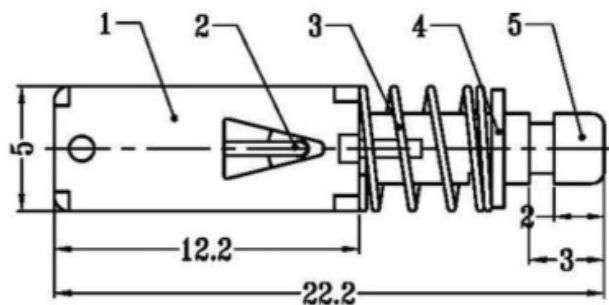


*a



P.C.B LAYOUT
BOTTOM VIEW



SPECIFICATIONS

1. LIFE TEST: WITHOUT LOADING 10000cycles at a speed of 15-18cycles
2. CONTACT RESISTANCE: 100mΩmax
3. INSULATION RESISTANCE: 100MΩmin
4. DIELECTRIC STRENGTH: 500V AC FOR 1MIN
5. OPERATING TEMPERATURE: -16°C-+60°C
6. RATING: .0.5A 30V DC
7. FUNCTION: 2P2T
8. TIMING: NON-SHORTING
9. OPERATING FORCE: 250gf±100gf

注: "*"表示关键尺寸(5个).

NO.	PARTS	MATERIALS	Q'TY	FINISHING
9	CONTACT CLIP	PBS C5210R-EH	1	Ag CLAD
8	SPRING PLATE	PBS STRIP	1	Ni PLATED
7	BASE	PHENOLIC RESIN	1	NATURAL
6	TERMINAL	BRASS STRIP	3	Ag PLATED
5	KNOB	PA66	1	BLUE
4	BLOCK	STEEL STRIP	1	Ni PLATED
3	SPRING	STEEL WIRE	1	Ni PLATED
2	CAM STICK	PBS WIRE	1	Ni PLATED
1	FRAME	STEEL STRIP	1	Ni PLATED

TOLERANCE UNLESS SPECIFIED					
WITHIN 1.5mm	: ±0.1mm	A	2008.6.8	初版	张小姐
OVER 1.5mm	: ±0.2mm	ISSUE	DATE	DESCRIPTIONS OF REVISION	APPD.
TITLE : PUSH SWITCH			UNIT : mm	DRWG NO.:	
MODEL:			SCALE: 3:1	DWN.	张小姐 2008.6.8
东莞市高迪电子有限公司 KDRR Electronic Switch Jack Co., Ltd.			CHK'D		刘工 2008.6.8
			APPD.		