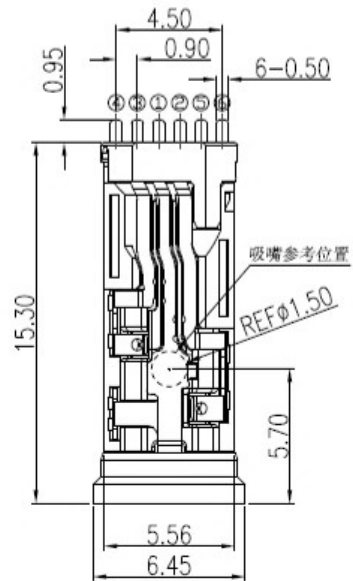


RoHS Compliant

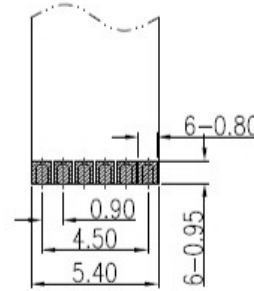
Halogen Free

CUSTOMER DRAWING

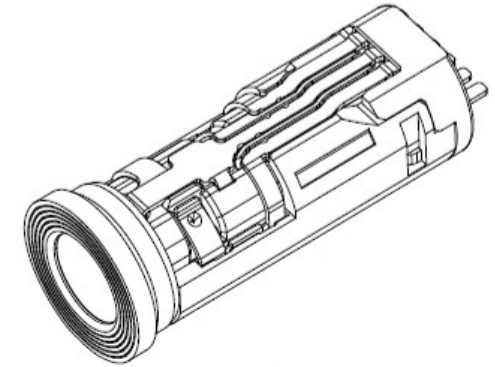


NOTES:

1. MATERIAL: SEE "TABLE 1";
2. FINISH: SEE "TABLE 1";
3. ELECTRICAL:
 - 3.1. VOLTAGE RATING: 12 VAC RMS;
 - 3.2. CURRENT RATING: 0.5 AMP;
 - 3.3. CONTACT RESISTANCE: 50mΩ Max.(Initial), 100mΩ Max.(After Life test);
 - 3.4. INSULATION RESISTANCE: 100 MΩ Min., 500VDC.(Initial), 50 MΩ Min., 500VDC.(After Humidity test);
 - 3.5. WITHSTAND VOLTAGE: 500 VAC RMS 50(60)Hz, 1 minute;
4. MECHANICAL:
 - 4.1. MATING FORCE: 3.0Kgf MAX.;
 - 4.2. UNMATING FORCE: 0.3Kgf MIN.;
 - 4.3. OPERATING LIFE: 5000 CYCLES MIN.;
5. ENVIRONMENTAL:
 - 5.1. OPERATION: -30°C~+80°C.



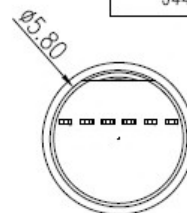
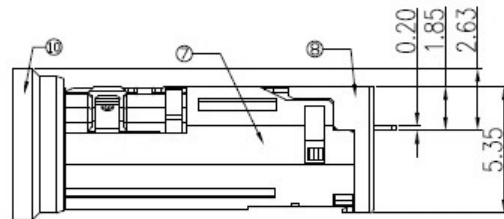
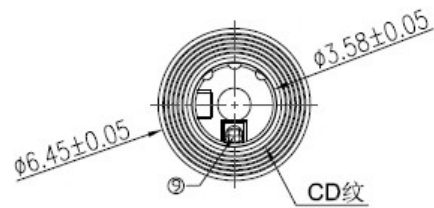
RECOMMENDED PCB LAYOUT(TOP VIEW)
(GENERAL TOLERANCE±0.05)



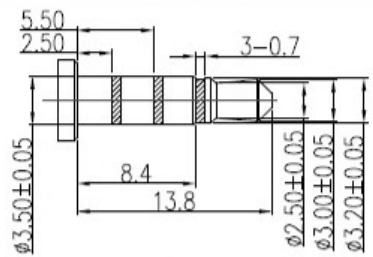
3D VIEW

TABLE 2:

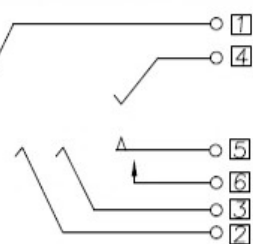
P/N	color
J441B06JA2ZL2	Black
J441B06JA2NL2	White
J441B06JA2YL2	Nature



PLUG SPEC



SCHEMATIC



AFTER INSERT SCHEMATIC

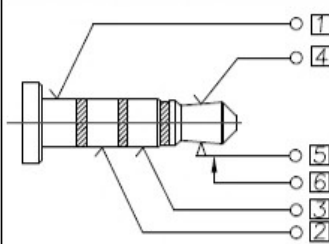


TABLE 1:

NO.	PART NAME	QTY	MATERIAL	DESCRIPTION	REMARK
⑩	Ring	1	C3604	Nickel.PLATED	
⑨	Insulator	1	HIGH TEMP	Black	
⑧	Cover	1	HIGH TEMP	SEE "TABLE 2"	
⑦	Housing	1	HIGH TEMP	SEE "TABLE 2"	
⑥	Contact_6	1	COPPER ALLOY	Au G/F Min. PLATED T=0.20mm	
⑤	Contact_5	1	COPPER ALLOY	Au G/F Min. PLATED T=0.20mm	
④	Contact_4	1	COPPER ALLOY	Au G/F Min. PLATED T=0.20mm	
③	Contact_3	1	COPPER ALLOY	Au G/F Min. PLATED T=0.20mm	
②	Contact_2	1	COPPER ALLOY	Au G/F Min. PLATED T=0.20mm	
①	Contact_1	1	COPPER ALLOY	Au G/F Min. PLATED T=0.20mm	

NO.	PART NAME	QTY	MATERIAL	DESCRIPTION	REMARK
-----	-----------	-----	----------	-------------	--------

UNLESS OTHERWISE,
GENERAL TOLERANCE:
X.xxx ±0.10
X.xx ±0.20
X.x ±0.30
X. ±0.38
ANGULAR:
X.xx ±1°
X.x ±3°
X. ±5°

东莞市高迪电子有限公司

TITLE: Φ3.5mm Phone Jack CONN. 客户图	P/N: SEE "TABLE 2"	MODEL: DRAW NO.:
THIRD ANGLE PROJECTION	UNIT: mm	SCALE: 1:1 SIZE: A4 SHEET: 1/1

ECN NO.	REV.	DESCRIPTION	DATE	CHANGE	DESIGN	任翔	2016.09.05
JH2016-133	X1	产品结构变更, 新增颜色规格	2016.09.05	任翔	CHECK	郑小伟	2016.09.05
N/A	X	NEW DRAWING	2016.07.30	任翔	APPROVAL	吕海涛	2016.09.05