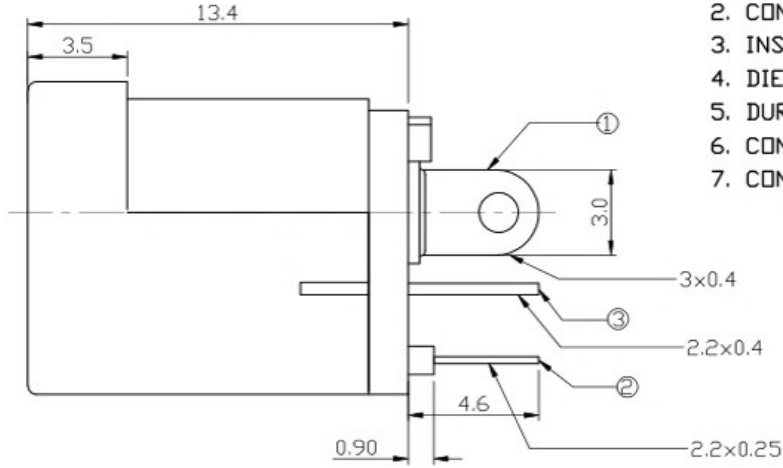
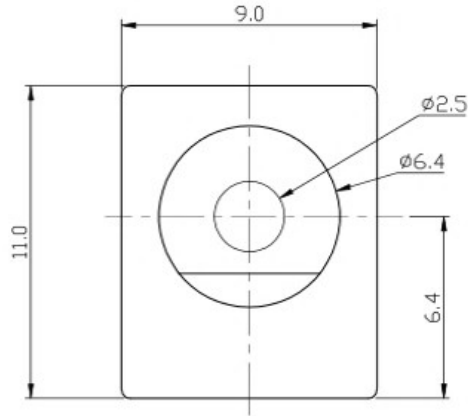
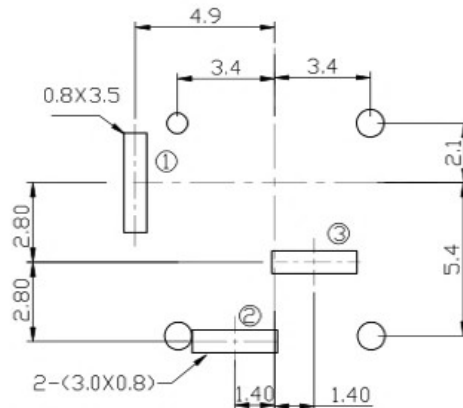
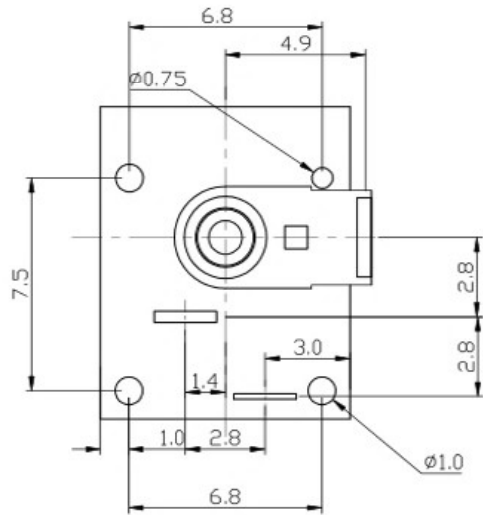


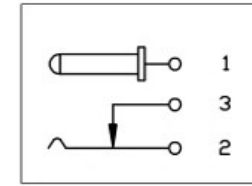
REV.	ECN NO.	DESCRIPTION	DESIGN	DATE
A		INITIAL	Kai	2012.05.16



1. CONTACT CURRENT RATING: DC 30V/0.5A.
2. CONTACT RESISTANCE: 50 mΩ MAX.;
3. INSULATION RESISTANCE: 100Ω MIN.;
4. DIELECTRIC WITHSTANDING: 500V AC MIN.;
5. DURABILITY: 5,000 CYCLES MIN.;
6. CONNECTOR MATING FORCES: 30N MAX.;
7. CONNECTOR UNMATING FORCES: 3N MIN.;



Recommended P.C.B Layout



SCHEMATIC

PIN	ø2.0	ø2.5
-----	------	------

ITEM	NAME	Q'TY	DESCRIPTION	NOTE
6	TERMINAL 4#	1	BRASS; NICKEL UNDER PLATING OVERALL,COPPER TIN PLATING OVER ALL;	
5	TERMINAL 3#	1	BRASS; NICKEL UNDER PLATING OVERALL,COPPER TIN PLATING OVER ALL;	T=0.25
4	TERMINAL 2#	1	BRASS; NICKEL UNDER PLATING OVERALL,COPPER TIN PLATING OVER ALL;	T=0.3
3	TERMINAL 1#	1	PHSPHOR BRONZE; NICKEL UNDER PLATING OVERALL,COPPER TIN PLATING OVER ALL;	T=0.3
2	BACK COVER	1	PBT COLOR BLACK	
1	HOUSING	1	PBT COLOR BLACK	

UNLESS OTHERWISE SPECIFIED TOLERANCES

DECIMALS:		ANGLES:	
DIM	TOL	DIM	TOL
X.	±0.50	X.	±2°
X.X	±0.30	X.X	±1°
X.XX	±0.20	X.XX	—
X.XXX	±0.10	X.XXX	—

东莞市高迪电子有限公司

DWG NO.	
DESIGN:	Kai
CHECK:	/
APPROVED	Lucky
	2012.05.16

PART NAME:		DC POWER JACK	
PART NO.			
REV.	UNIT:	SHEET:	
A	mm	1/1	