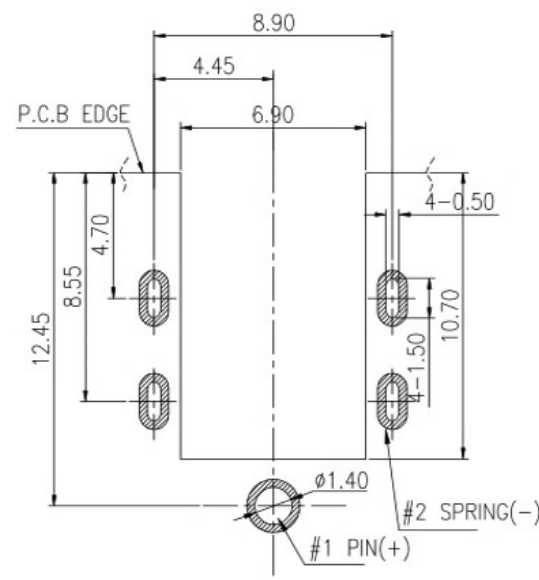
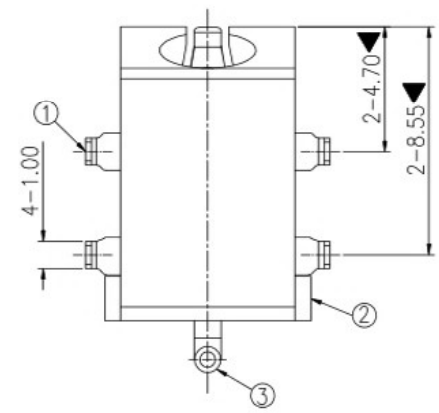
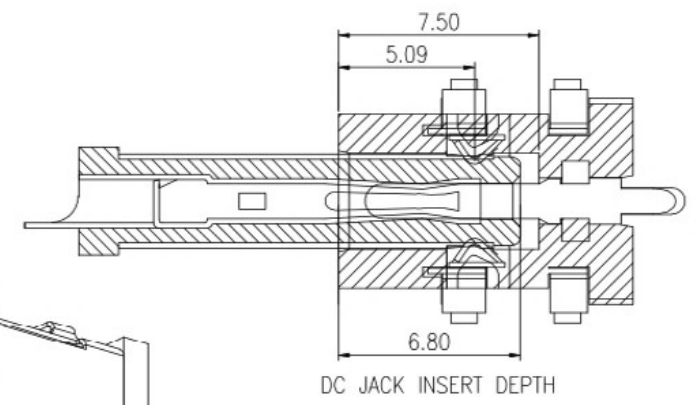
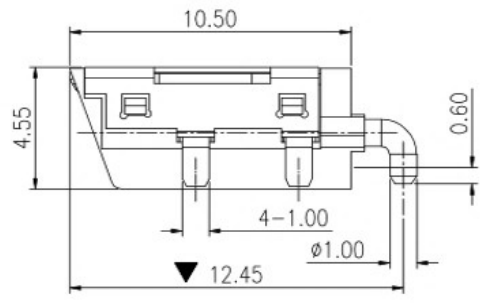
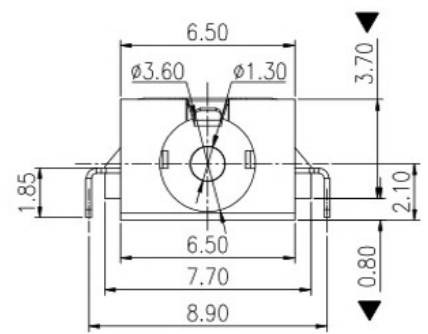
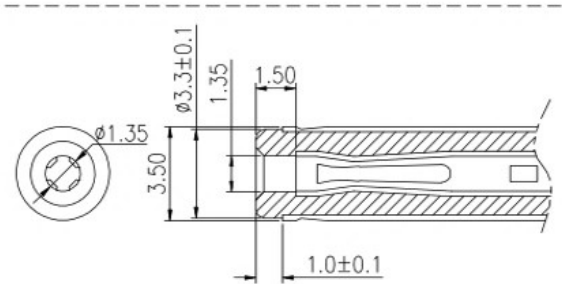


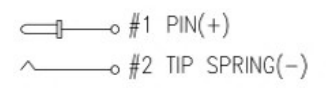
REV.	ECN NO.	DESCRIPTION	DESIGN	DATE
A	XXXXXXX	INITIAL	Kai	2018.05.08



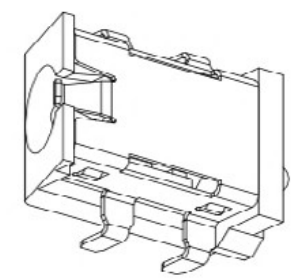
RECOMMENDED PCB LAYOUT
TOP VIEW (TOLERANCE:±0.05)



MATE PLUG



ELECTRICAL CIRCUIT



3D VIEW

SPECIFICATIONS:

- ELECTRICAL CHARACTERISTICS:
 - RATING: 24V 3A
 - CONTACT RESISTANCE: 30mΩ MAX.(INITIAL)
 - DIELECTRIC WITHSTANDING VOLTAGE: 500V AC FOR ONE MINUTE
 - INSULATION RESISTANCE: 100MΩ MIN. MEASURED BY 500V DC
- MECHANICAL CHARACTERISTICS:
 - INSERTION FORCE : 0.3~3.0 KGF
 - WITHDRAWAL FORCE : 0.3~3.0 KGF
- LIFE TEST: 5,000 CYCLES MIN.
- FOR REFLOW SOLDERING LEAD-FREE PROCESS.
- ▼ REPRESENT CRITICAL DIMENSIONS.
- ▽ CPK CONTROLLED DIMENSIONS.

③	CENTER PIN MT	1	BRASS Ø1.3	Au
②	TERMINAL	1	PHOSPHOR BRONZE 0.2t	Au
①	HOUSING	1	PA-10T	Black
NO.	DESCRIPTION	QTY	MATERIAL	PLATING & COLOR

东莞市高迪电子有限公司

UNLESS OTHERWISE SPECIFIED TOLERANCES				PART NAME: DC 电源插座			
DECIMALS:		ANGLES:		DWG NO.		PART NO.	
X.	±0.50	X.	±2°	DESIGN:		REV. A	
X.X	±0.30	X.X	±1°	CHECK:		UNIT: mm	
X.XX	±0.20	X.XX	—	APPROVED		SHEET: 1/1	
X.XXX	±0.10	X.XXX	—				