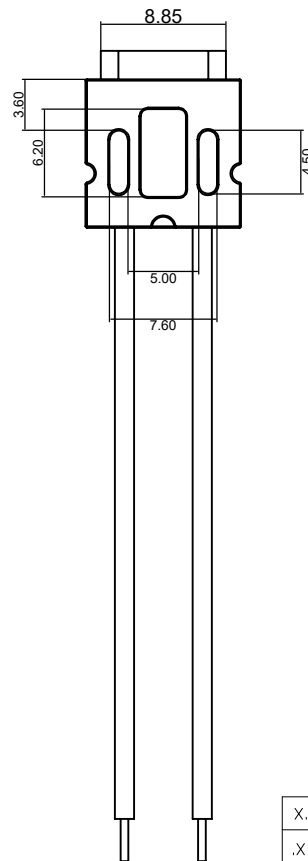
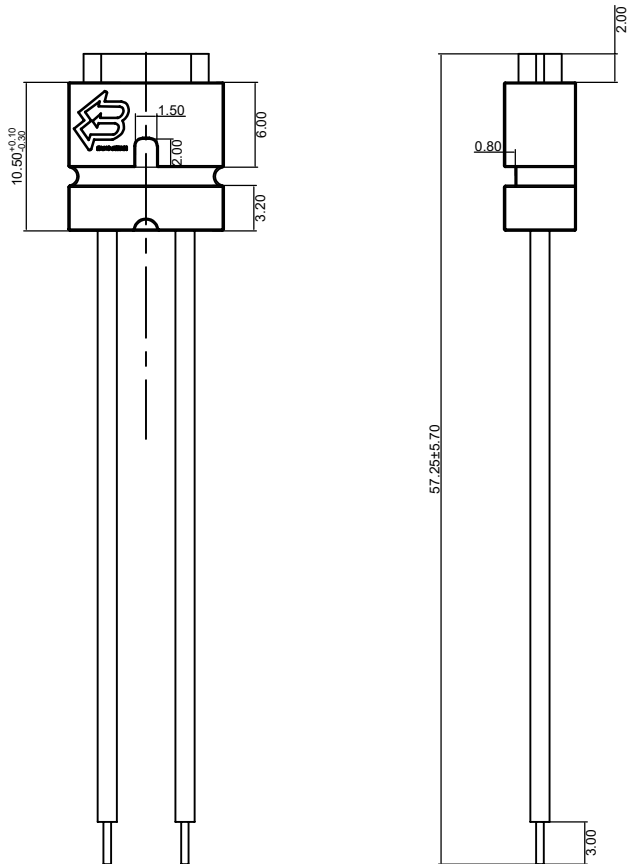
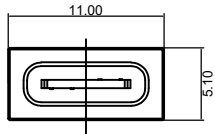




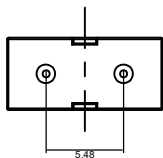
REV.	ZONE	DESCRIPTION	DESIGN	DATE
B		NEW		



57.25±5.70

3.00

红 黑
24AWG



NOTES:

1.MATERIAL:

MOLDING: LCP UL94 V-0
CONTACT: COPPER ALLOY.
GOLD PLATED Min ON CONTACT AREA, 100u"
Min TIN (LEAD FREE) ON SOLDER AREA,
SHELL: SUS304-H,T=0.30±0.03mm
50u" NICKEL PLATING OVER ALL.

2.MECHANICAL:

INSERTION: 5~20N.
EXTRACTION: 8~20N AFTER TEST.
DURABILITY: 10000 CYCLES

3.ELECTRICAL:

CURRENT: 3A FOR VBUS;
1.25A FOR GND PIN.
0.25A FOR OTHER.

VOLTAGE: 20 V MAX
WITHSTANDING VOLTAGE: 100V AC R.M.S.
CONTACT RESISTANCE: 40mΩ MAX.
INSULATION RESISTANCE: 100MΩ MIN.

4.ENVIRONMENTAL

TEMPERATURE RANGE -25°C ~ +85°C

X, ±0.50	X.* ± 2°	UNITS
.X ±0.30	.X* ± 1°	mm
.XX ±0.10	.XX* ± 0.5°	MAT'L
.XXX ±0.05		

THESE DRAWINGS AND SPECIFICATIONS ARE THE PROPERTY OF SHENZHEN CHUANGYUE TECHNOLOGY CO.,LTD. AND SHALL NOT BE REPRODUCED, COPIED OR USED IN ANY MANNER WITHOUT THE PRIOR WRITTEN CONSENT OF SHENZHEN CHUANGYUE TECHNOLOGY CO., LTD

FINISH	APPD:
Q'TY	CHKD:
	DR:

FINISH
APPD: GD-TYPEC-FS-2PL
CHKD:
DR:

东莞市高迪电子有限公司

TITLE:

TYPE C 2P带线母座

DWG NO.:
111001

SCALE	SHEET	REV.
1/1	1/1	A1