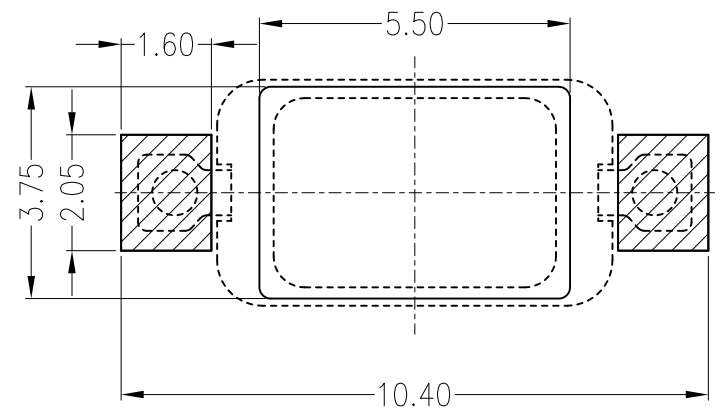
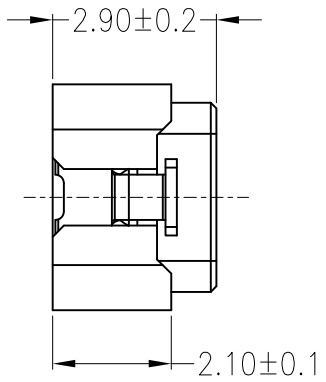
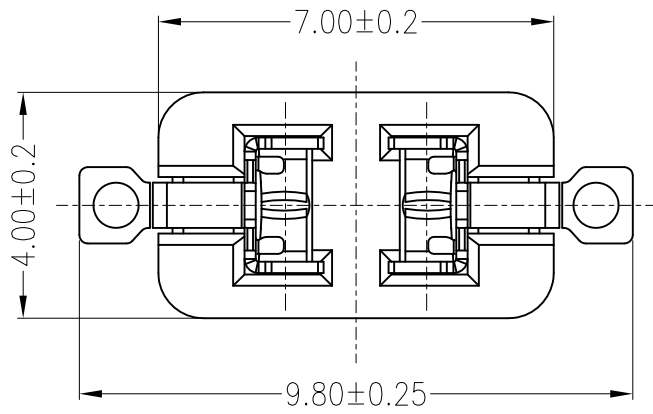
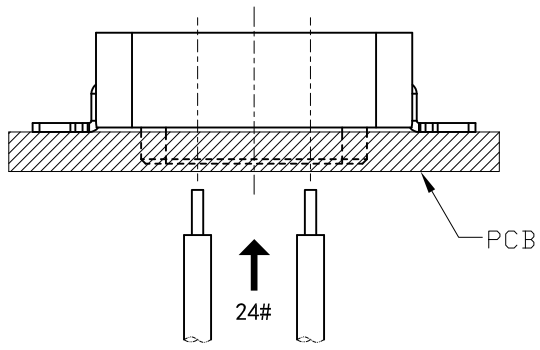
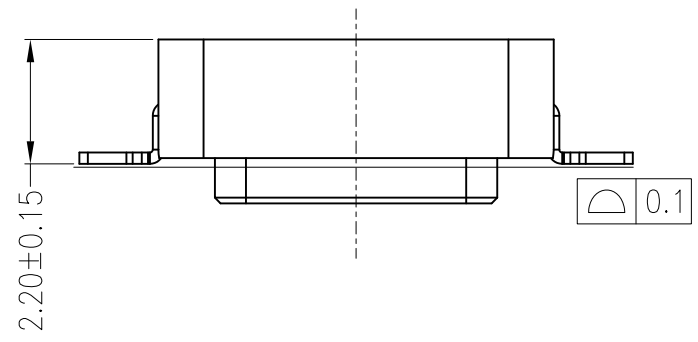


REV	DESCRIPTION	DESIGN	DATE
A	NEW RELEASE	Lingqing	2020/09/22



Board Layout
General Tolerance: ±0.05



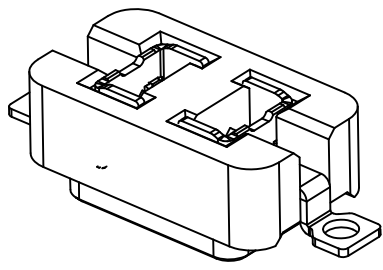
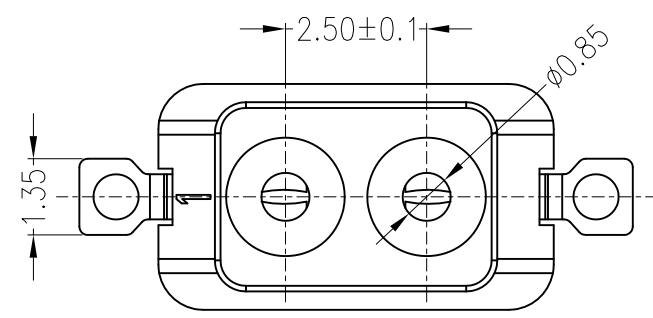
Assembly Layout

Specifications:

- Contact resistance: ≤20mΩ
- Insulation resistance: ≥1000MΩ
- Rated voltage: 250V AC DC
- Rated current: 1.0A AC DC
- Withstand Voltage: 1000V AC/minute
- Temperature Range: -40°C ~ +120°C
- Housing: PPA, Natural (Beige)
- Contacts: Phosphor Bronze /Sn-plated

ORDER INFORMATION:

L2505AFV-02-H1MA1-R	
PART No.:	PACKAGING: R=REEL
No.OF CIRCUITS: 02	Metal code: 1=Phosphor Bronze
PLASTIC MATERIAL: H1M=PPA(BEIGE)	PLATING: A=Sn-plated



東莞市高迪電子有限公司
DONG GUAN GAO DI ELECTRONICS CO., LTD

GENERAL TOLERANCE		USE:	TITLE:	
X. ±0.50	X. ±5'	CUSTOMER	2.5mmPITCH 180°WAFER SMT TYPE	
X.X ±0.30	X.X ±2'	APPD: WangFeng	PART NO.:	
X.XX ±0.20	X.XX ±1'	CHKD: Shaojinghe	L2505AFV-02-H1MA1-R	
UNITS: mm	DR: Zenglingqing		DWG NO.:	
			GCKH-2177	
			SCALE 1 : 1	SHEET 1 / 1