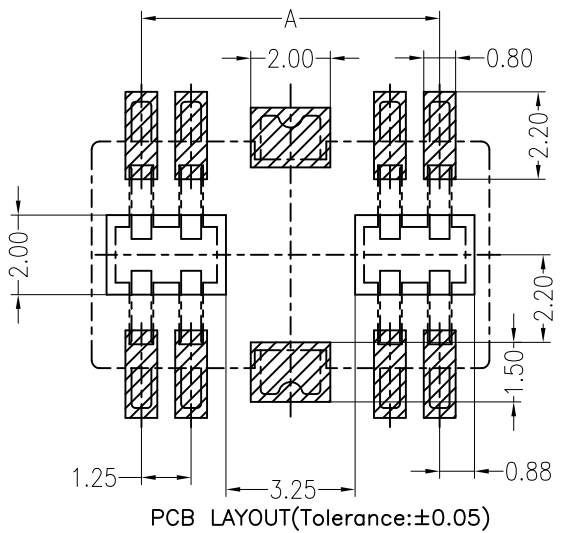
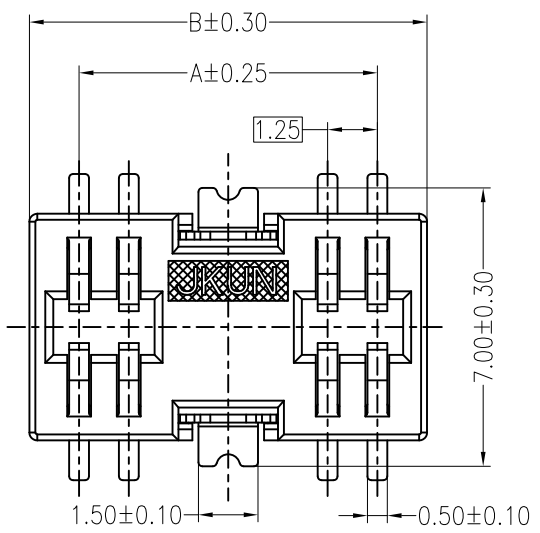
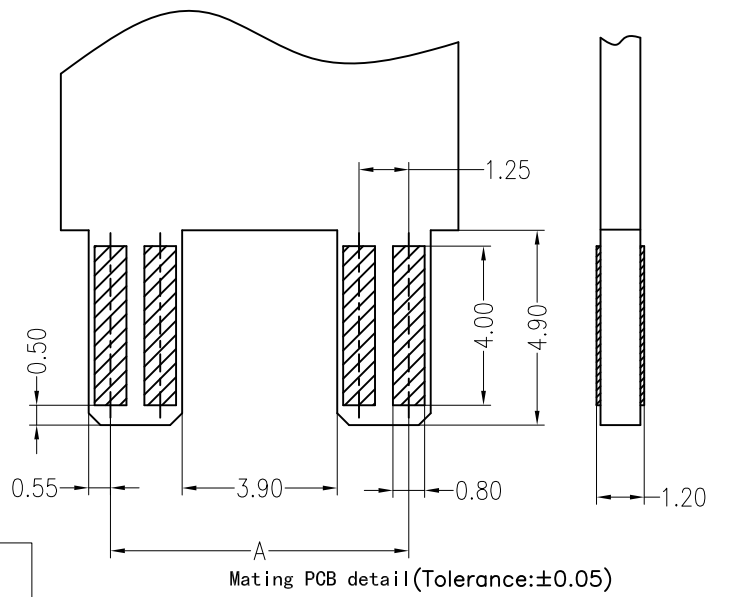
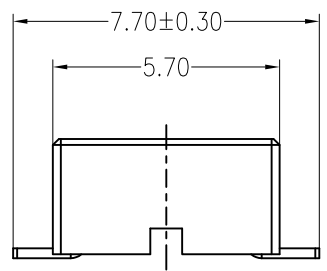
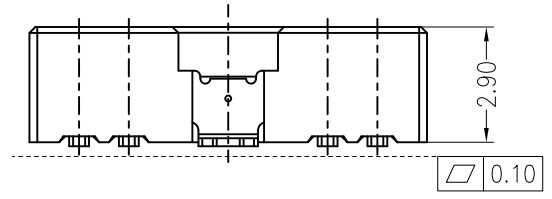


REV	DESCRIPTION	DESIGN	DATE
A0	NEW RELEASE	FangSongLe	2020/04/06



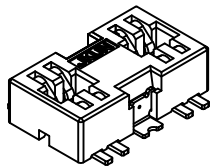
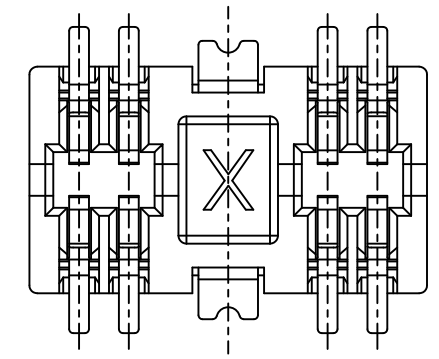
**Specifications:**  
 Contact resistance: ≤20mΩ  
 Insulation resistance: ≥1000MΩ  
 Rated voltage: 125V AC DC  
 Rated current: 1.0A AC DC  
 Withstand Voltage: 1000V AC/minute  
 Temperature Range: -25°C ~ +105°C  
 Housing: LCP UL94V-0, BEIGE  
 Contacts: Phosphor Bronze / MATTE Sn-plated



**ORDER INFORMATION:**  
**L1251AWV-2\*\*-F8MB1-R**

PART No.	PACKAGING: R=REEL
No. OF CIRCUITS: 08-12	Metal code: 1=Phosphor Bronze
PLASTIC MATERIAL: FBM=LCP(BEIGE)	PLATING: B=MATTE Sn

PIN	DIM A	DIM B
*2x4	7.50	10.00
*2x6	10.00	12.50



**東莞市高迪電子有限公司**  
 DONG GUAN GAO DI ELECTRONICS CO., LTD

GENERAL TOLERANCE		USE:
X. ±0.50	X. ±5'	CUSTOMER
X.X ±0.30	X.X ±2'	APPD: Liuzhengling
X.XX ±0.20	X.XX ±1'	CHKD: Steven
UNITS: mm		DR: FangSongLe

TITLE: -	
PART NO.: L1251AWV-2**-F8MB1-R	
DWG NO.: GCKH-2024	
SCALE 1 : 1	SHEET 1 / 1

A | B | C | D | E | F

1  
2  
3  
4  
5