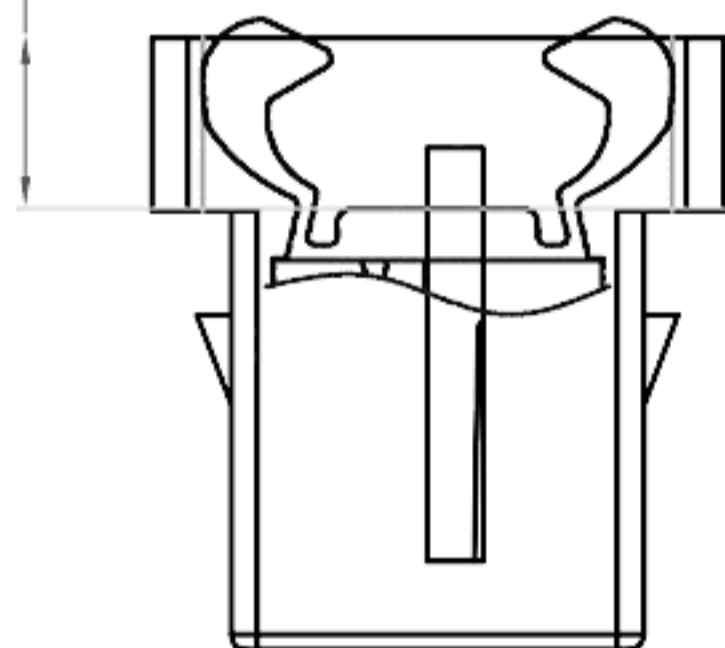
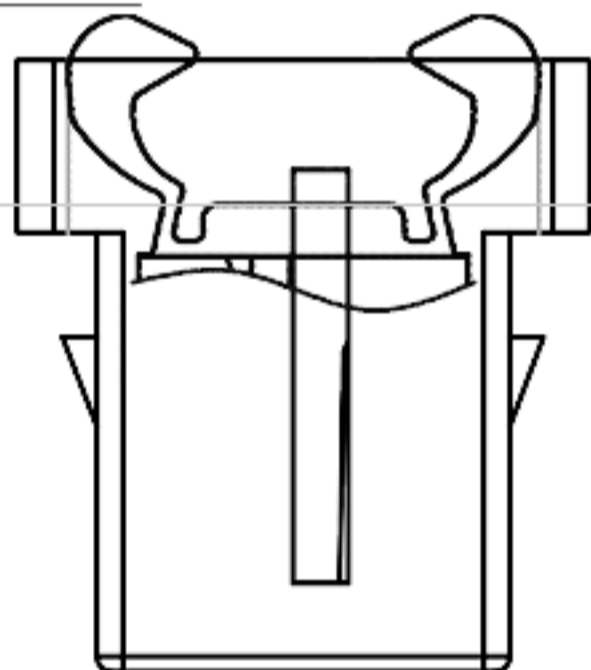


材料清单:
 壳: POM
 键: PA66
 簧: SUS304
 针: SUS304

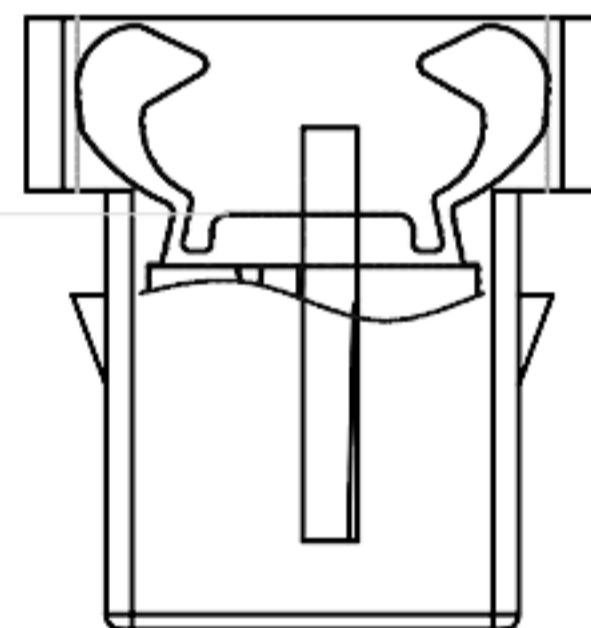
下压约3.6mm达到锁定行程



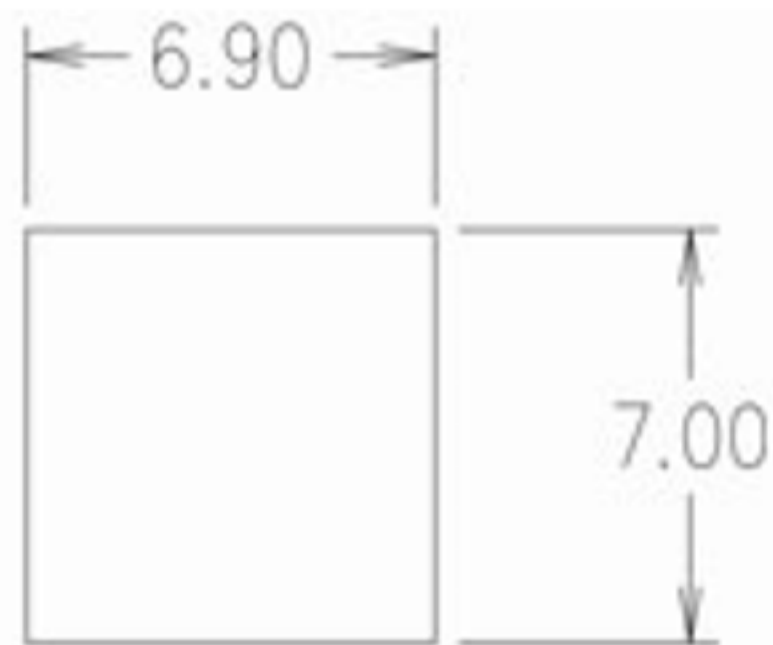
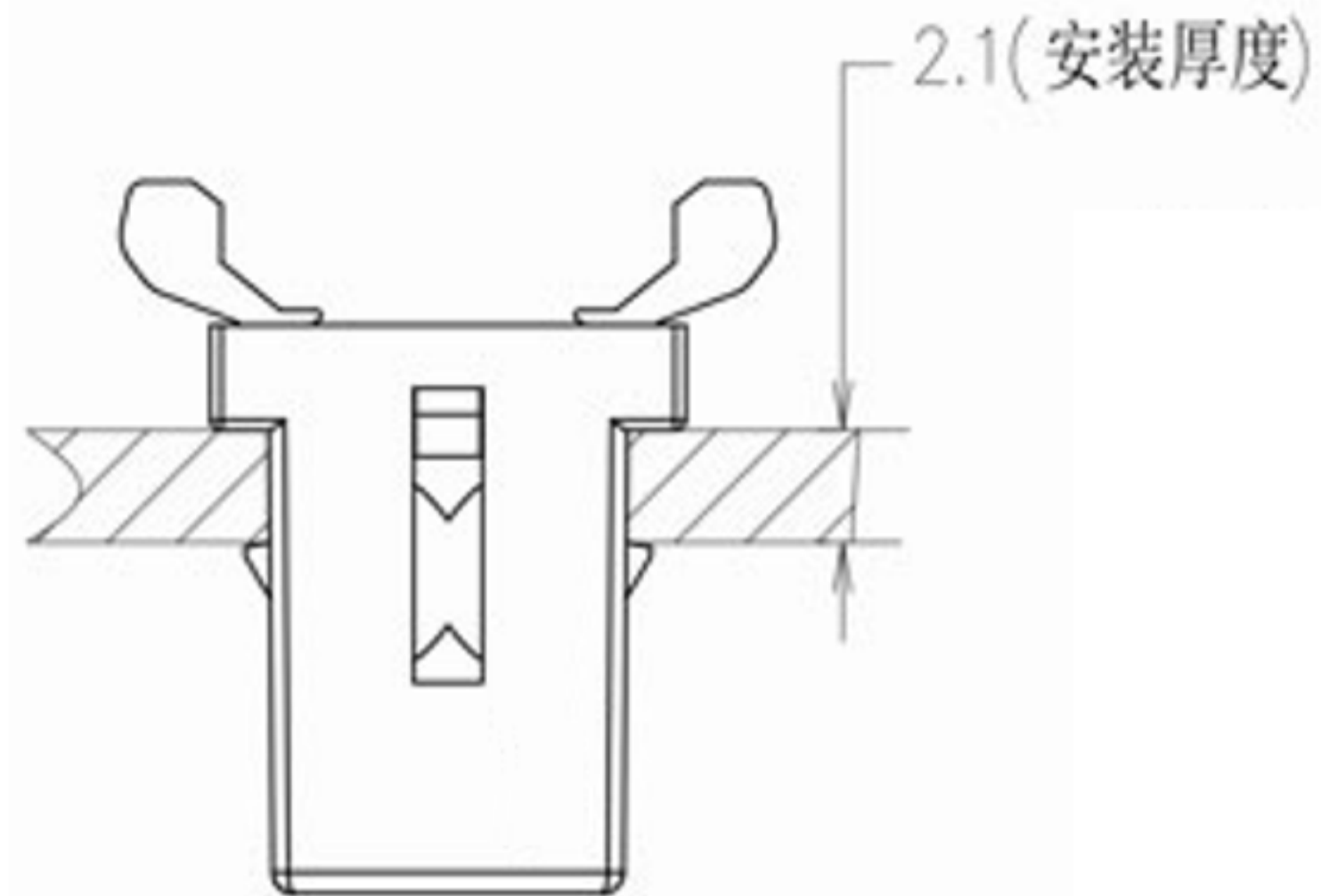
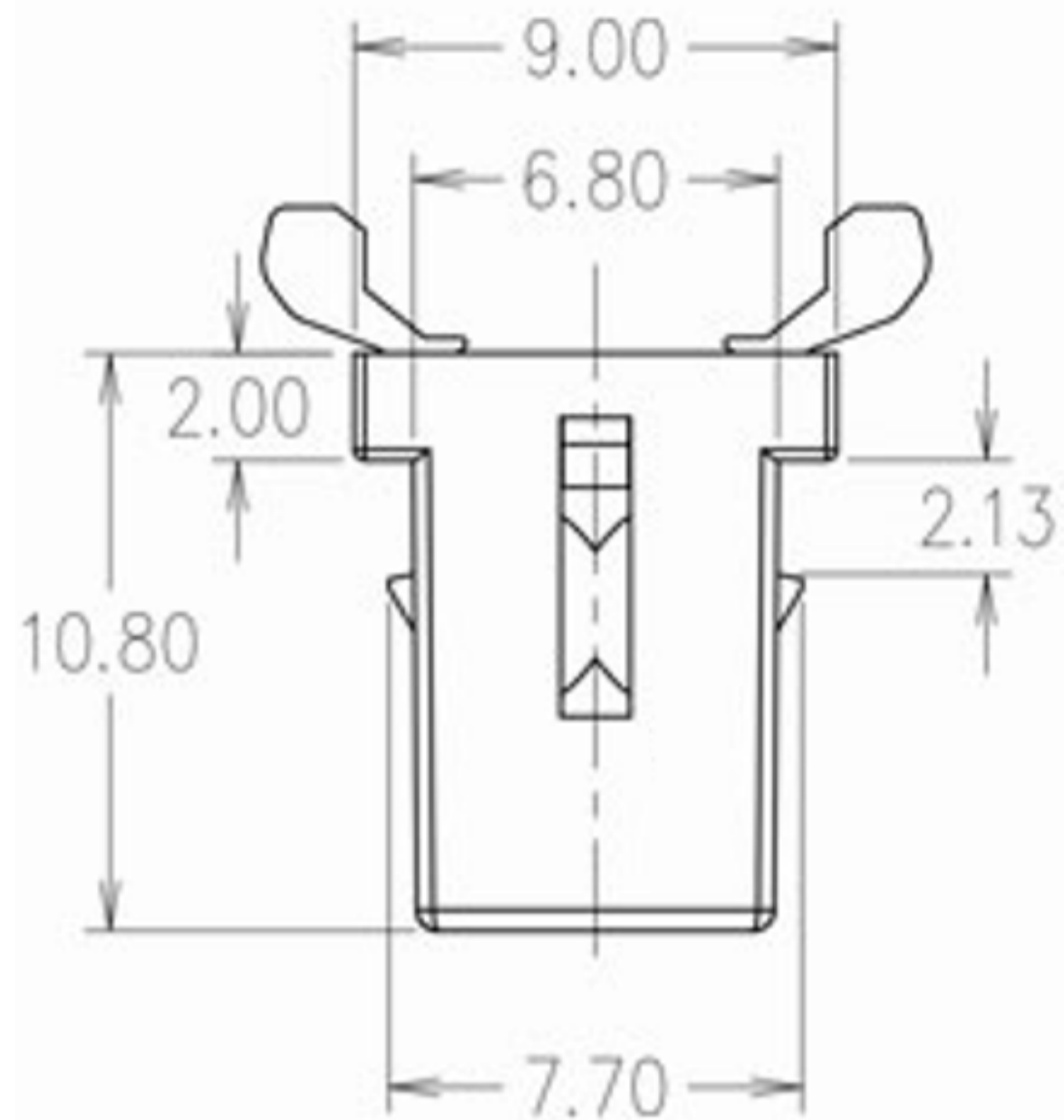
回弹约1.0mm呈锁定状态



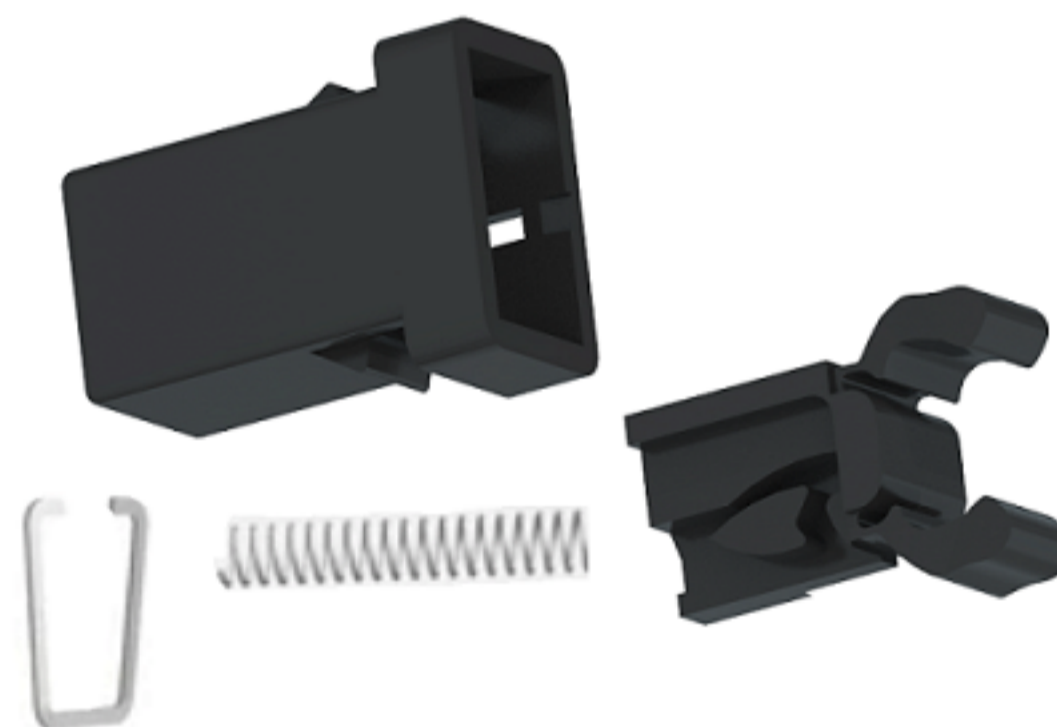
继续下压约1.0mm达到开锁行程



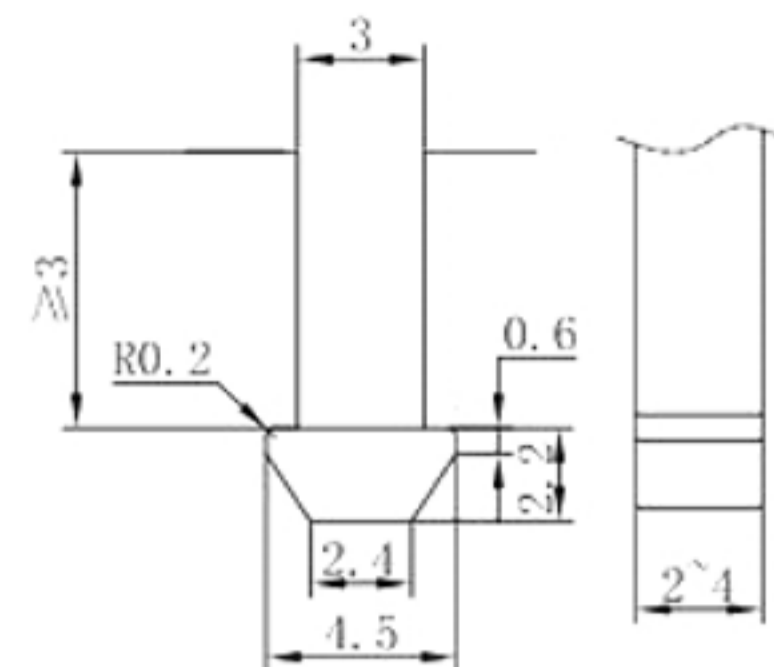
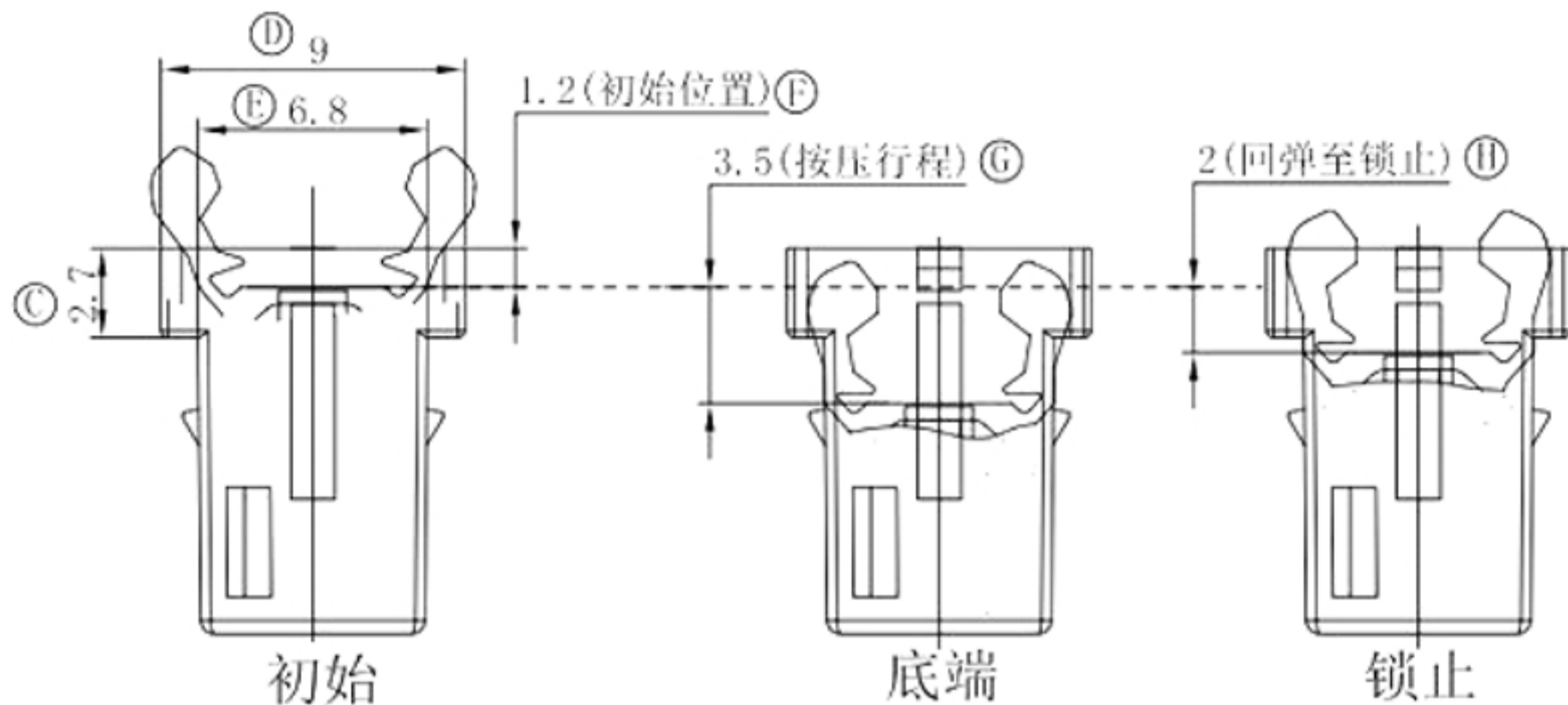
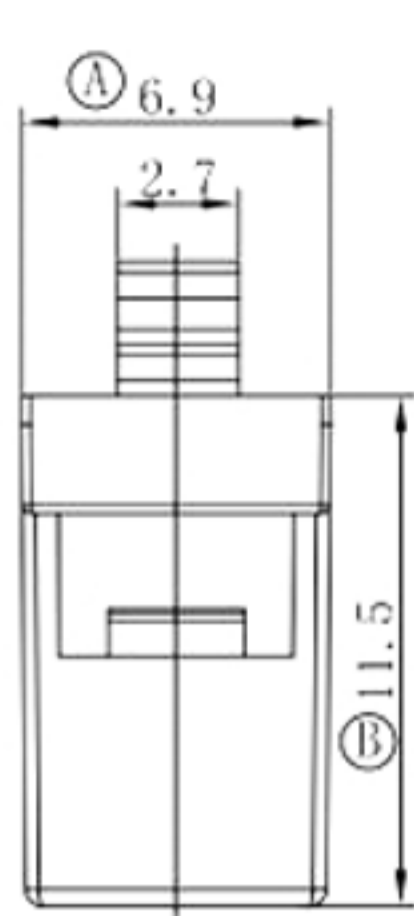
TITLE	DOOR LATCH SWITCH	DRAWN		TOLERANCE OTHERWISE UNLESS SPECIFIED	8					
PART NO.	Lock switch	CHECKED		UP TO 5	±0.2	6				
DRAW NO.	GD-PR-20S	APPROVED		ABOVE 5 ~ 30	±0.3	5				
SCALE: 2:1	UNIT: mm	DATE:		ABOVE 30 ~ 50	±0.4	4				
				ABOVE 50	±0.5	3	SPRING	SUS	1 Ni PLATED	
				ANGLE	±3°	2	HOUSING	POM	1 BLACK	
						1	SLIDER	PA12	1 BLACK	
						NO.	PARTS	MATERIAL	QTY. FINISHING	
東莞市高迪電子有限公司							DONG GUAN GAODI ELECTRONICS CO., LTD.			



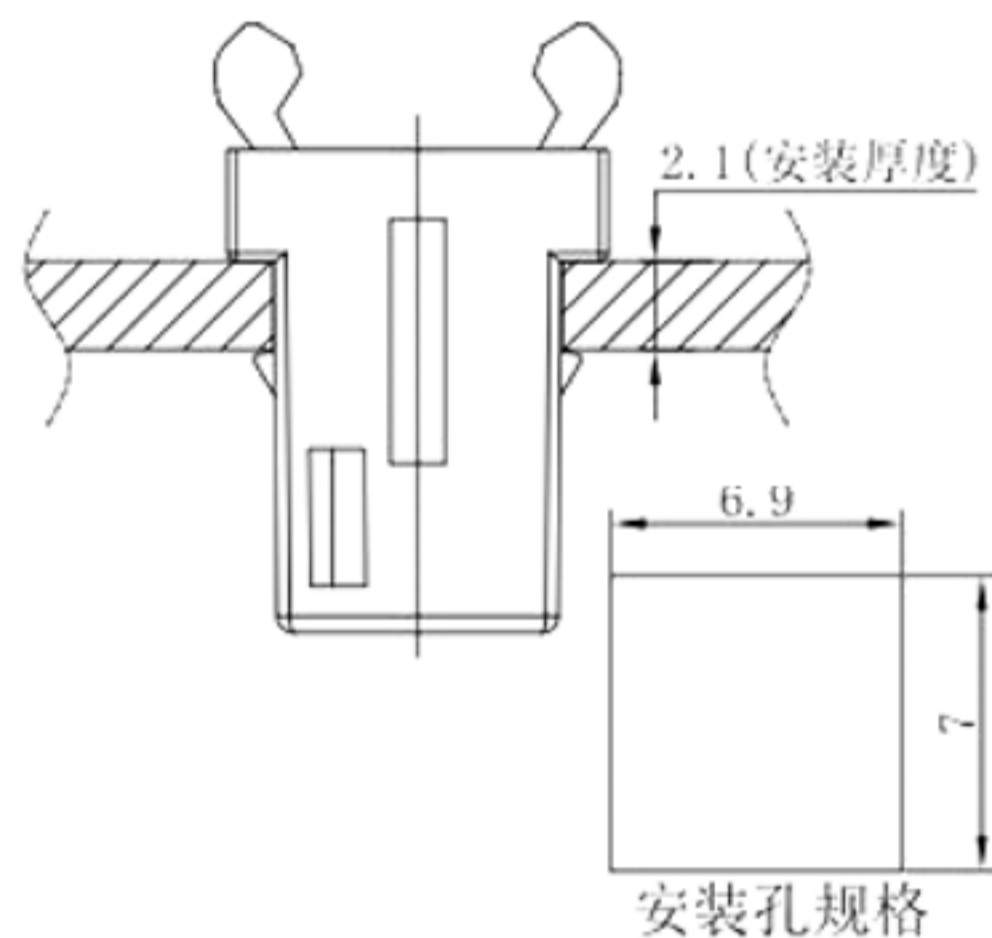
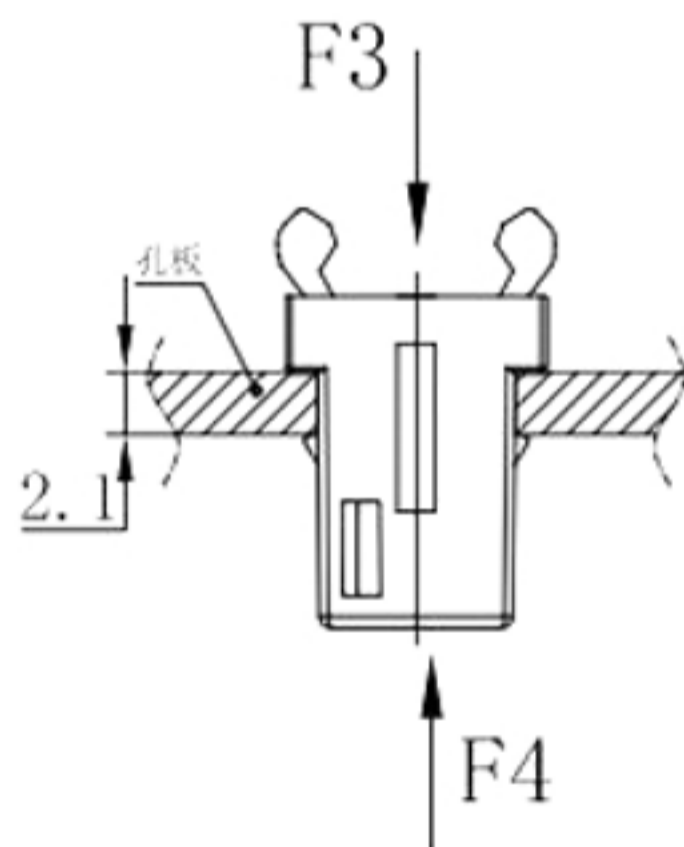
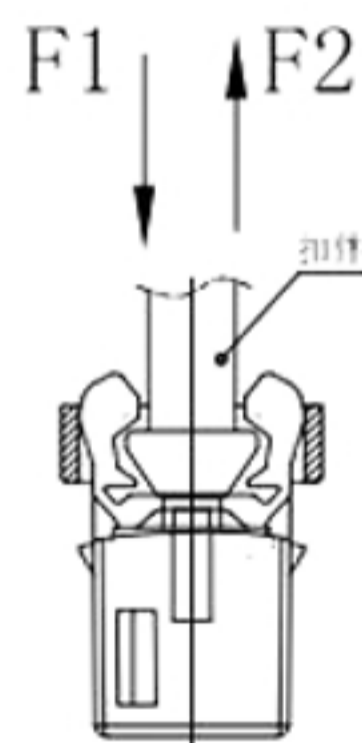
安装孔规格



TITLE	DOOR LATCH SWITCH	DRAWN		TOLERANCE OTHERWISE UNLESS SPECIFIED	8				
PART NO.	Lock switch	CHECKED		UP TO 5	±0.2	6			
DRAW NO.		APPROVED		ABOVE 5 ~ 30	±0.3	5			
SCALE: 2:1	UNIT: mm	DATE:		ABOVE 30 ~ 50	±0.4	4			
				ABOVE 50	±0.5	3	SPRING	SUS	1 Ni PLATED
				ANGLE	±3'	2	HOUSING	POM	1 BLACK
						1	SLIDER	PA12	1 BLACK
						NO.	PARTS	MATERIAL	QTY. FINISHING
東莞市高迪電子有限公司							DONG GUAN GAODI ELECTRONICS CO., LTD.		



锁舌公头



技术要求:

- 1、储存温度: 5℃~30℃; 使用温度: -35℃~80℃;
- 2、产品室温下操作及承载能力:
按压操作力 $F1=3.3 \pm 0.9 \text{ N}$
锁紧夹持力 $F2 \geq 10 \text{ N}$
- 3、产品室温下装配于板孔插拔力:
装配插入力 $F3 \leq 25 \text{ N}$
装配拔出力 $F4 \geq 50 \text{ N}$
- 4、寿命要求:
室温下, 负载5N, 按压至锁止 → 等待1s
→ 按压至解锁 → 等待1s, 循环间隔时间1s,
20000次循环后产品无功能失效;
- 5、高低温循环:
产品锁止状态, 负载10N, -35℃/4H → 45℃/4H
→ 80℃/4H, 95%RH, 循环测试120H
放置常温下2h, 测试动作无异常。
- 6、与产品配合的对手件和安装板参考图示。
- 7、产品符合ROHS环保要求。

TITLE	DOOR LATCH SWITCH	DRAWN		TOLERANCE OTHERWISE UNLESS SPECIFIED	8				
PART NO.	Lock switch	CHECKED		UP TO 5	±0.2	6			
DRAW NO.		APPROVED		ABOVE 5 ~ 30	±0.3	5			
SCALE: 2:1	UNIT: mm	DATE:		ABOVE 30 ~ 50	±0.4	4			
				ABOVE 50	±0.5	3	SPRING	SUS	1 Ni PLATED
				ANGLE	±3°	2	HOUSING	POM	1 BLACK
						1	SLIDER	PA12	1 BLACK
						NO.	PARTS	MATERIAL	QTY. FINISHING
東莞市高迪電子有限公司					DONG GUAN GAODI ELECTRONICS CO., LTD.				